

Perth & Argyll Conservancy (East)
1km semi-natural woodland FHN

expansion potential (new woodland)

expansion potential (conversion)

restoration potential

condition improvement potential

FHN without potential for target

0

2.5

5

10

15

20

Kilometers

Forest Research

Forestry Commission Scotland

Priority woodland

lowland mixed broadleaves

native pinewood

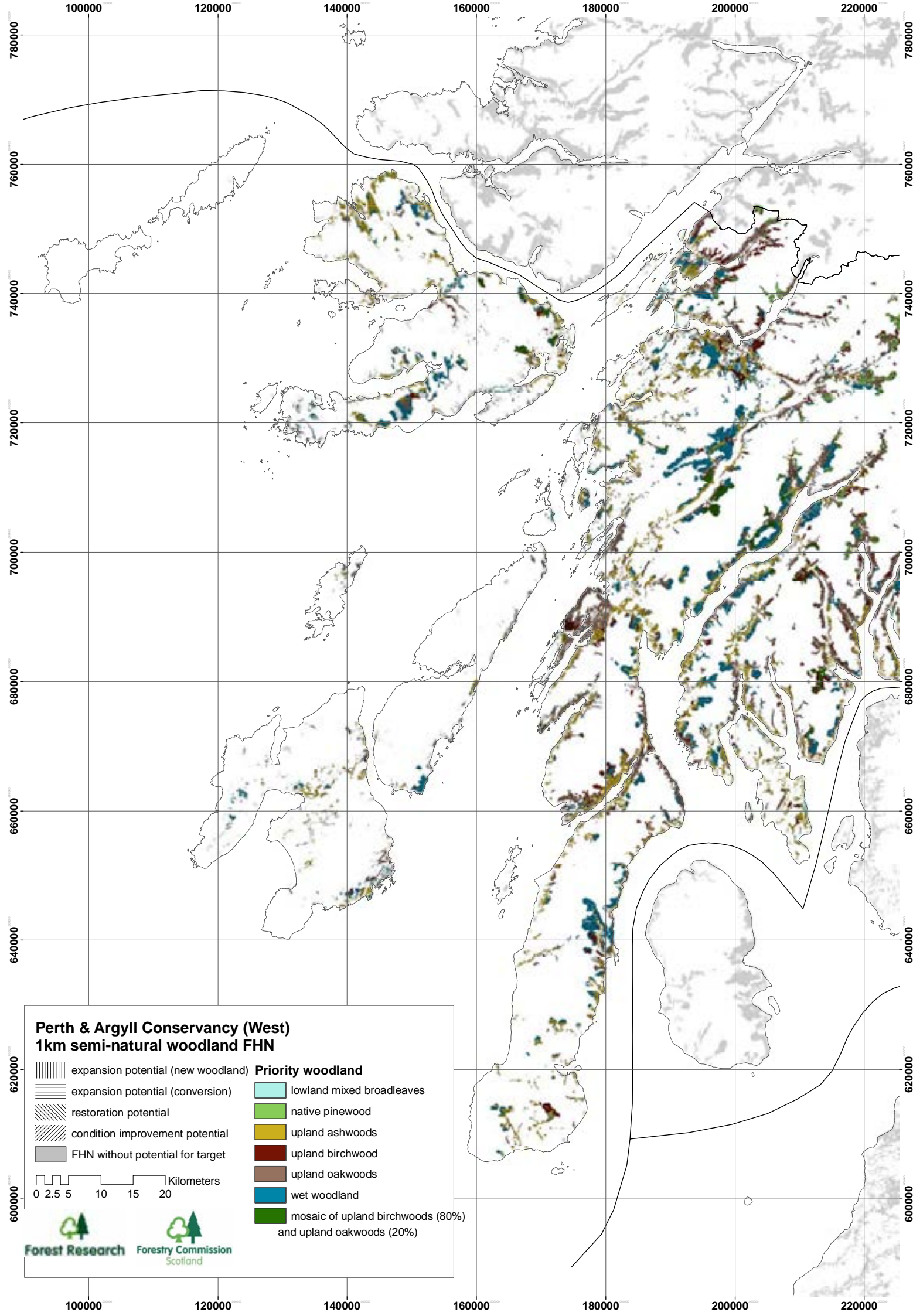
upland ashwoods

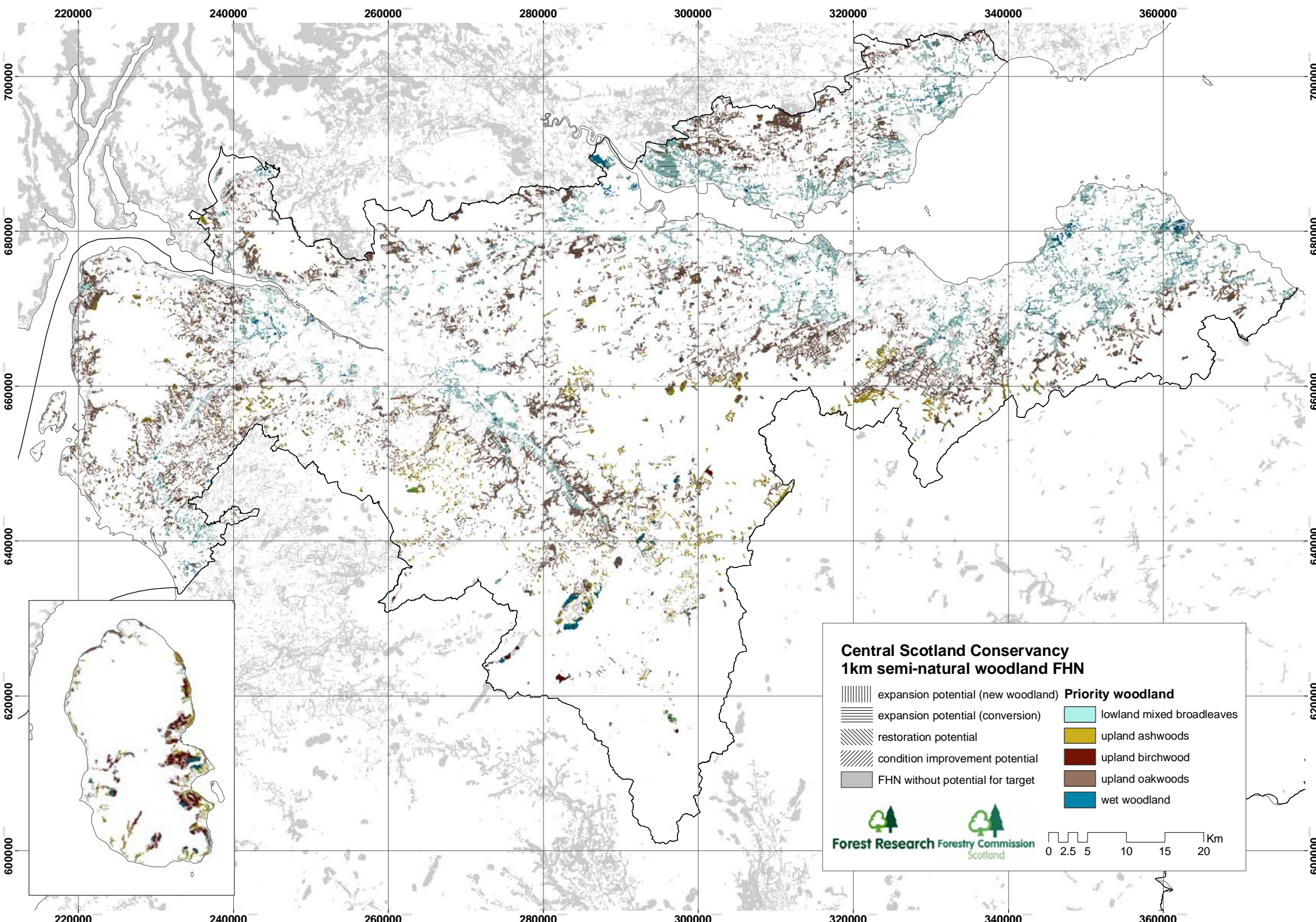
upland birchwood

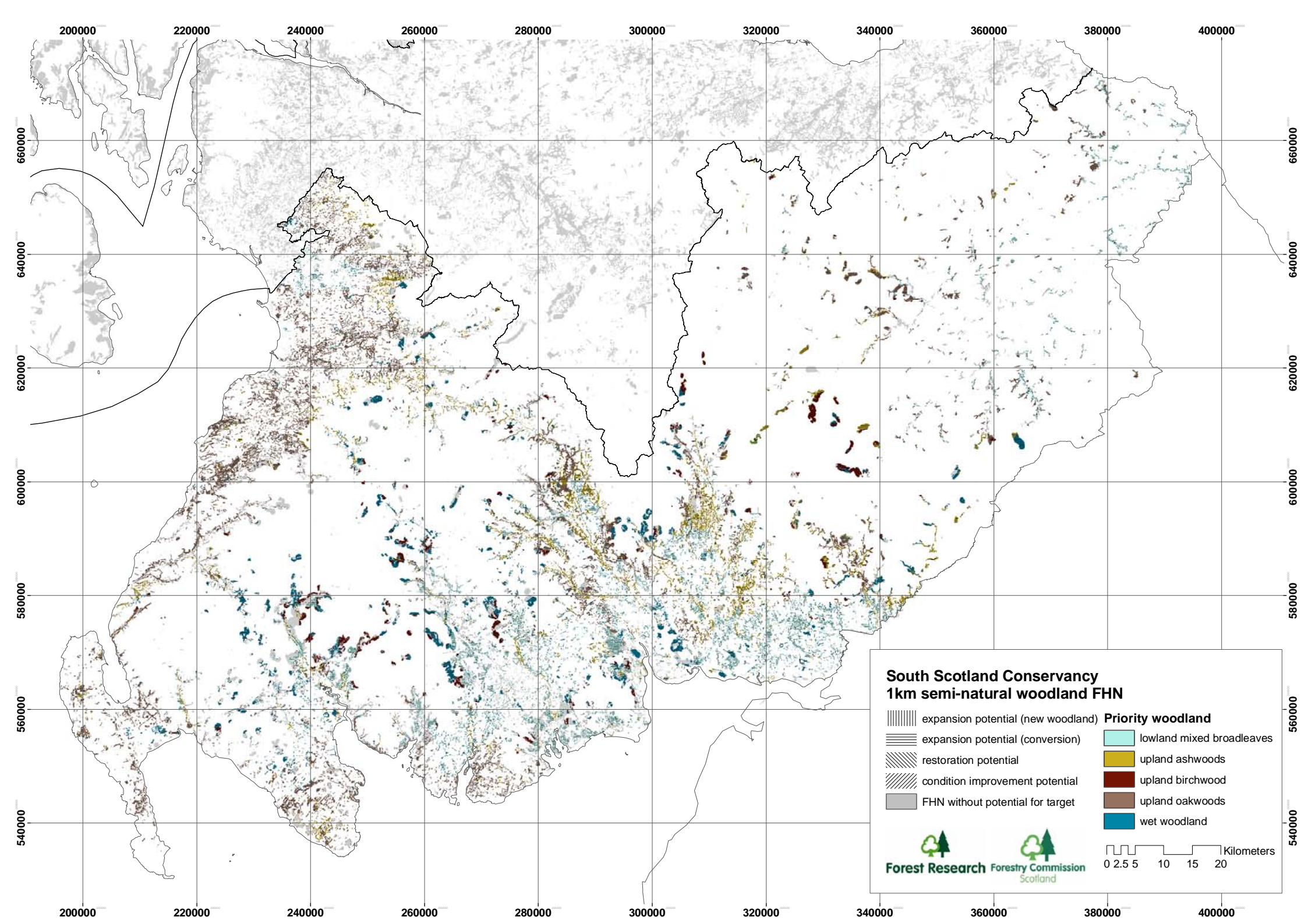
upland oakwoods

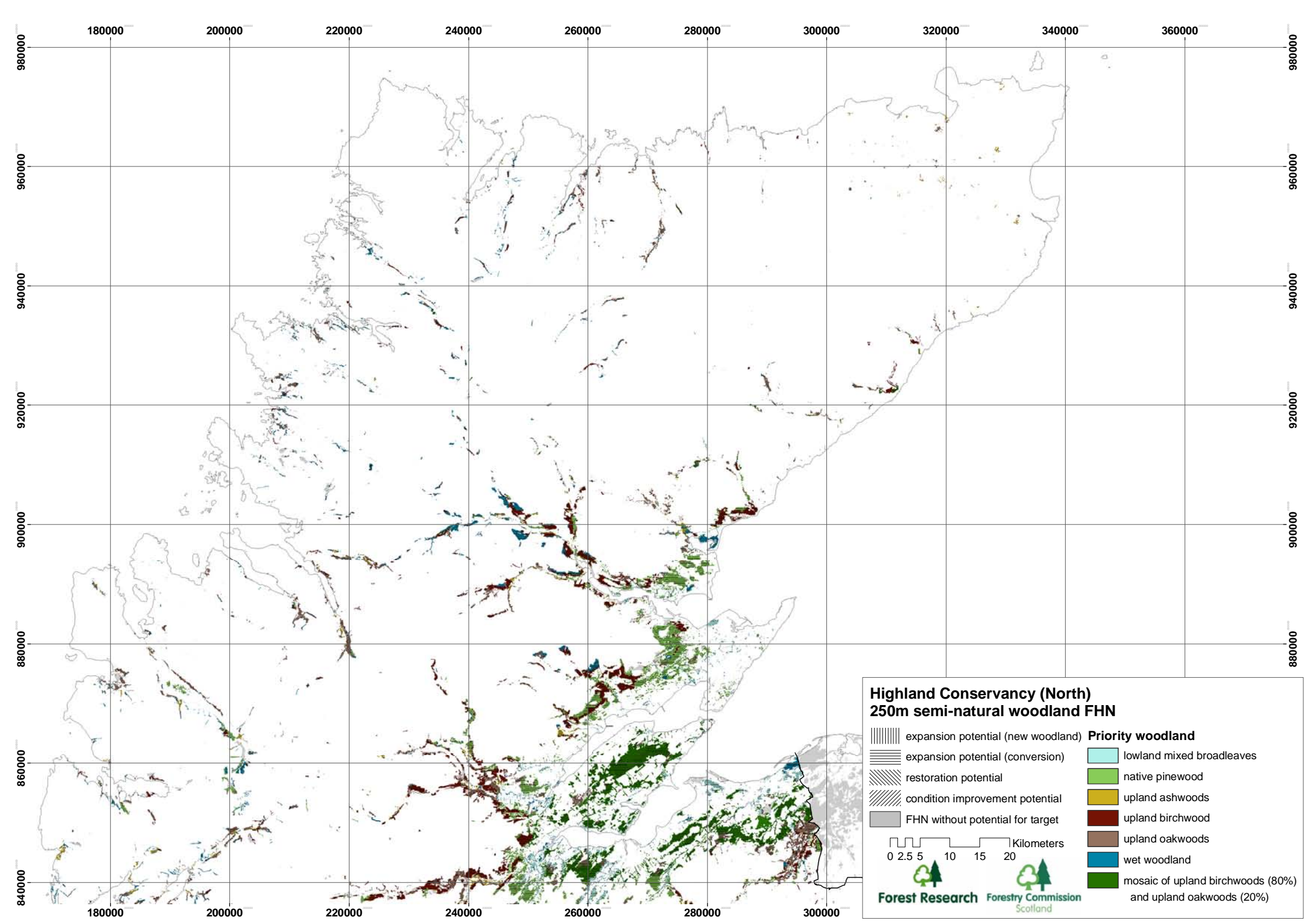
wet woodland

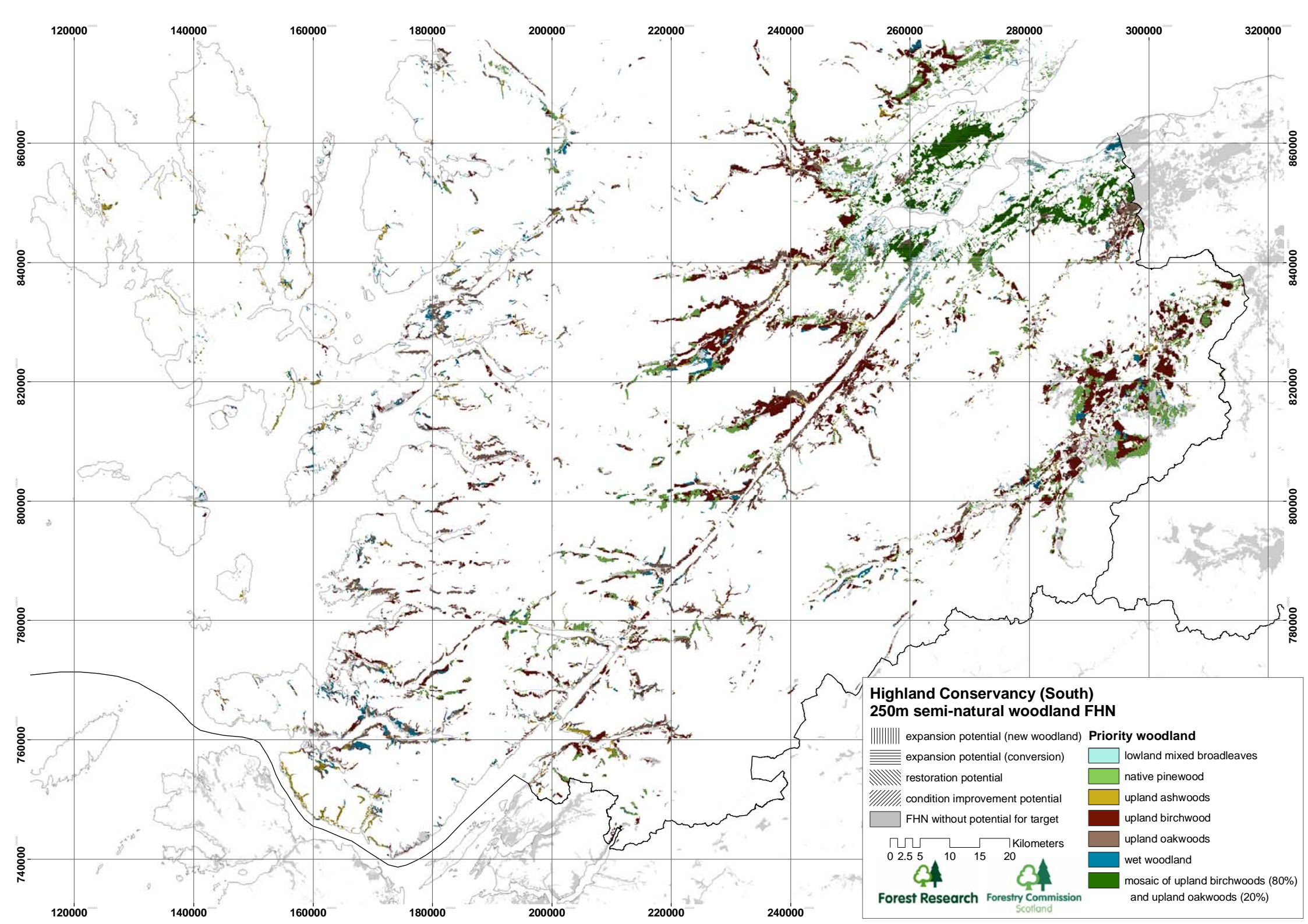
mosaic of upland birchwoods (80%) and upland oakwoods (20%)

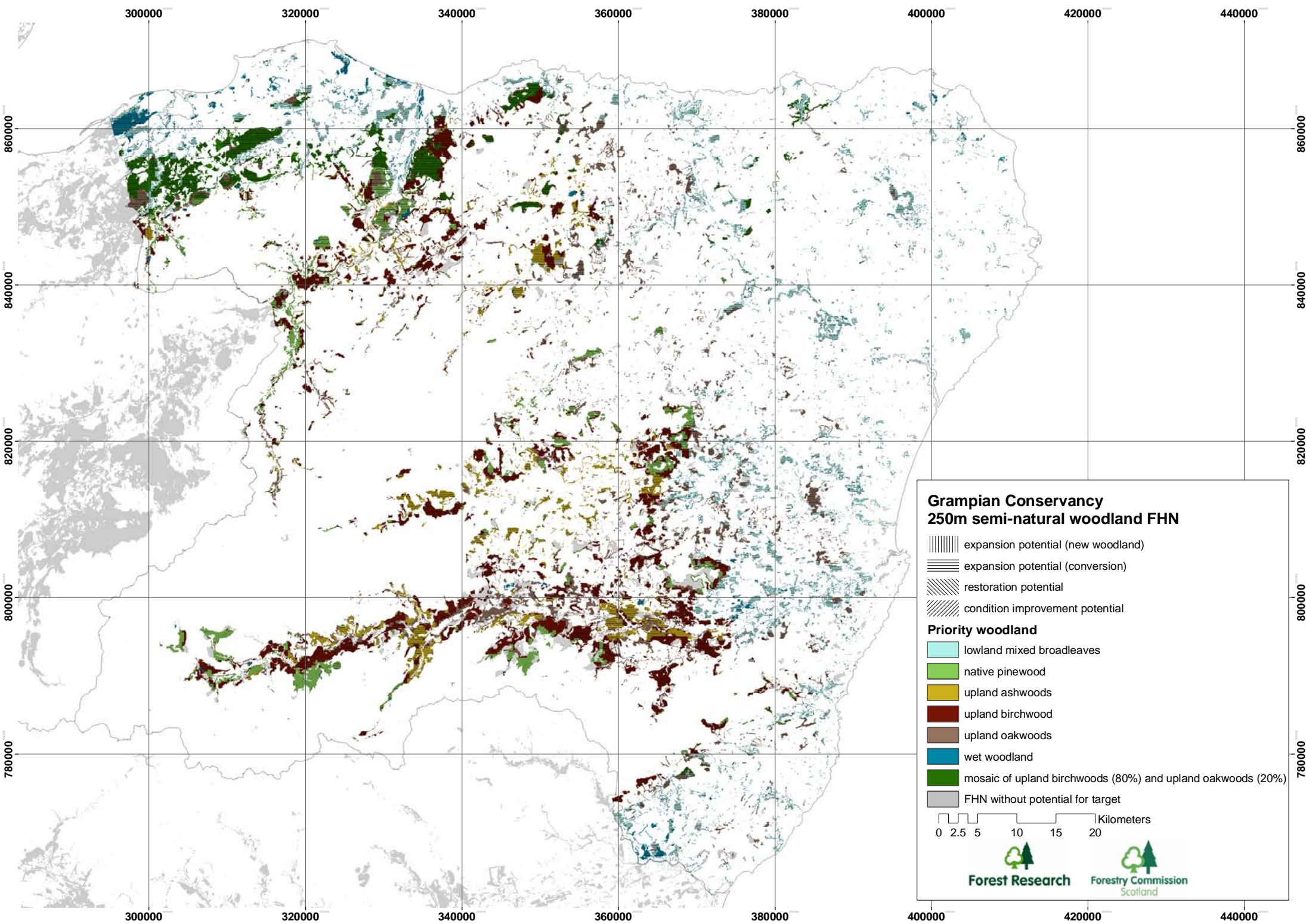


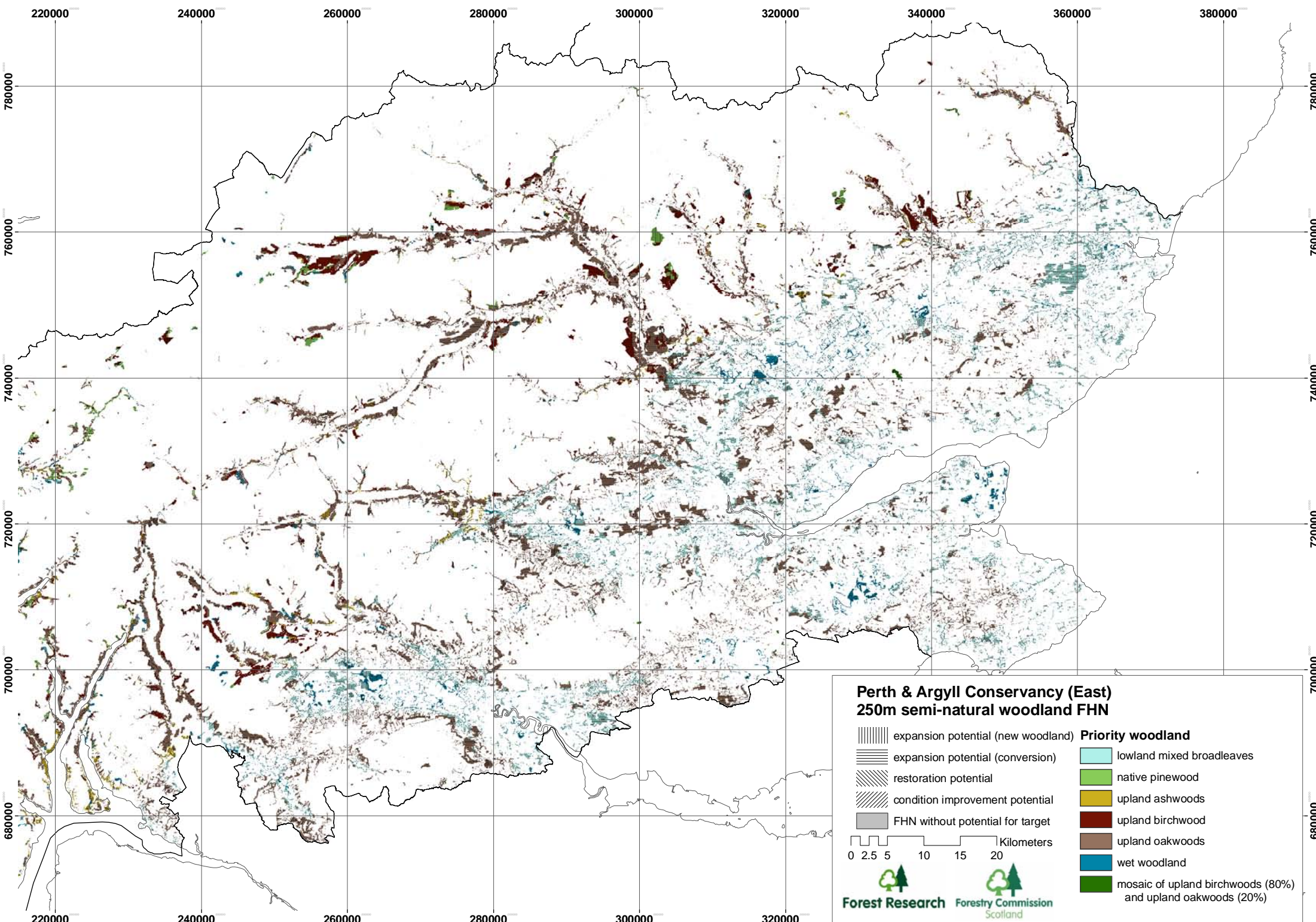












Perth & Argyll Conservancy (East)
250m semi-natural woodland FHN

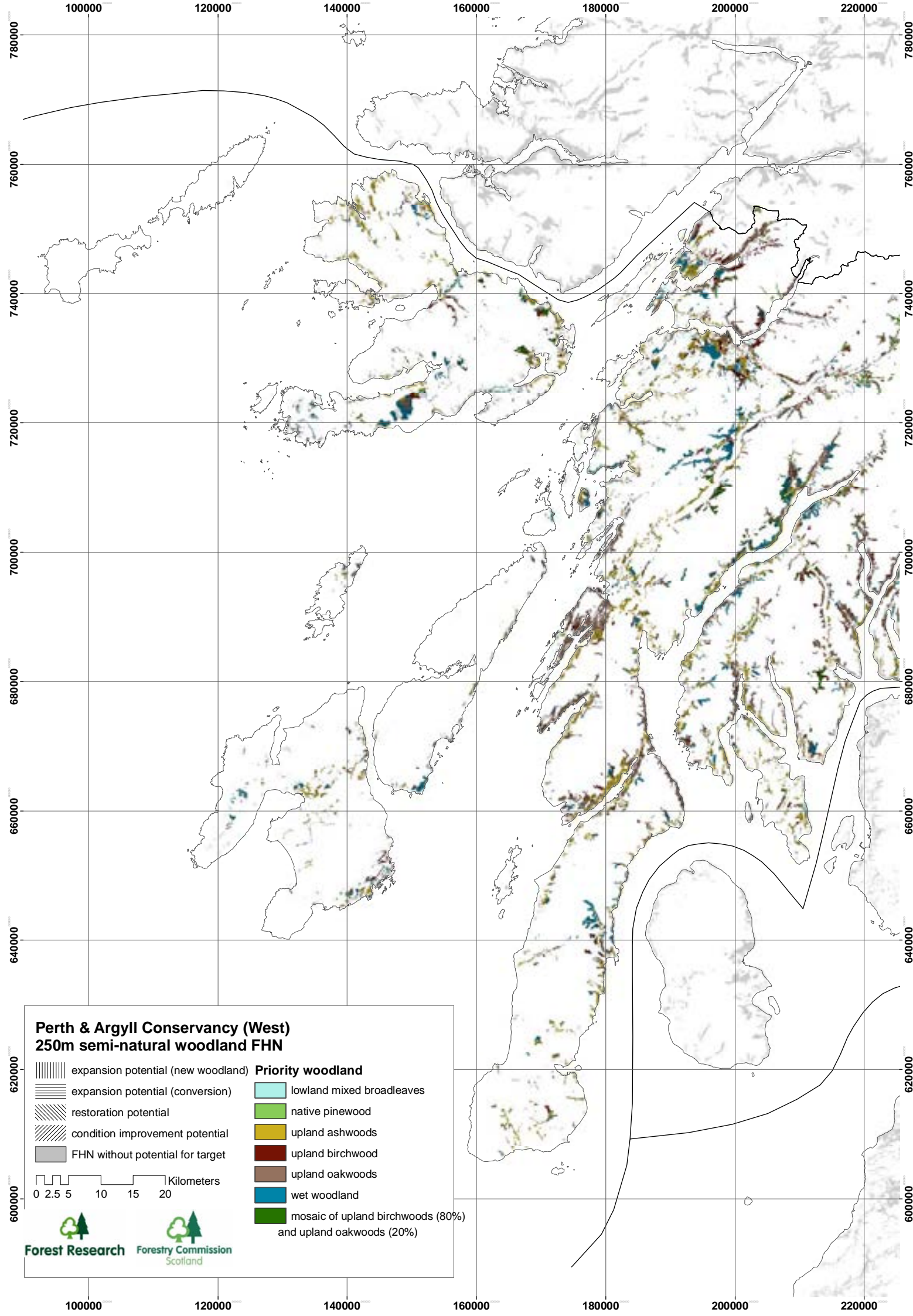
- ||||| expansion potential (new woodland)
- ==== expansion potential (conversion)
- ||||| restoration potential
- ||||| condition improvement potential
- FHN without potential for target

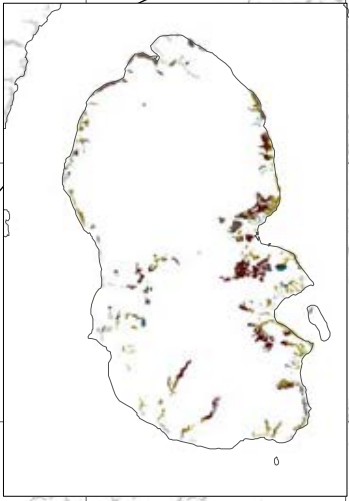
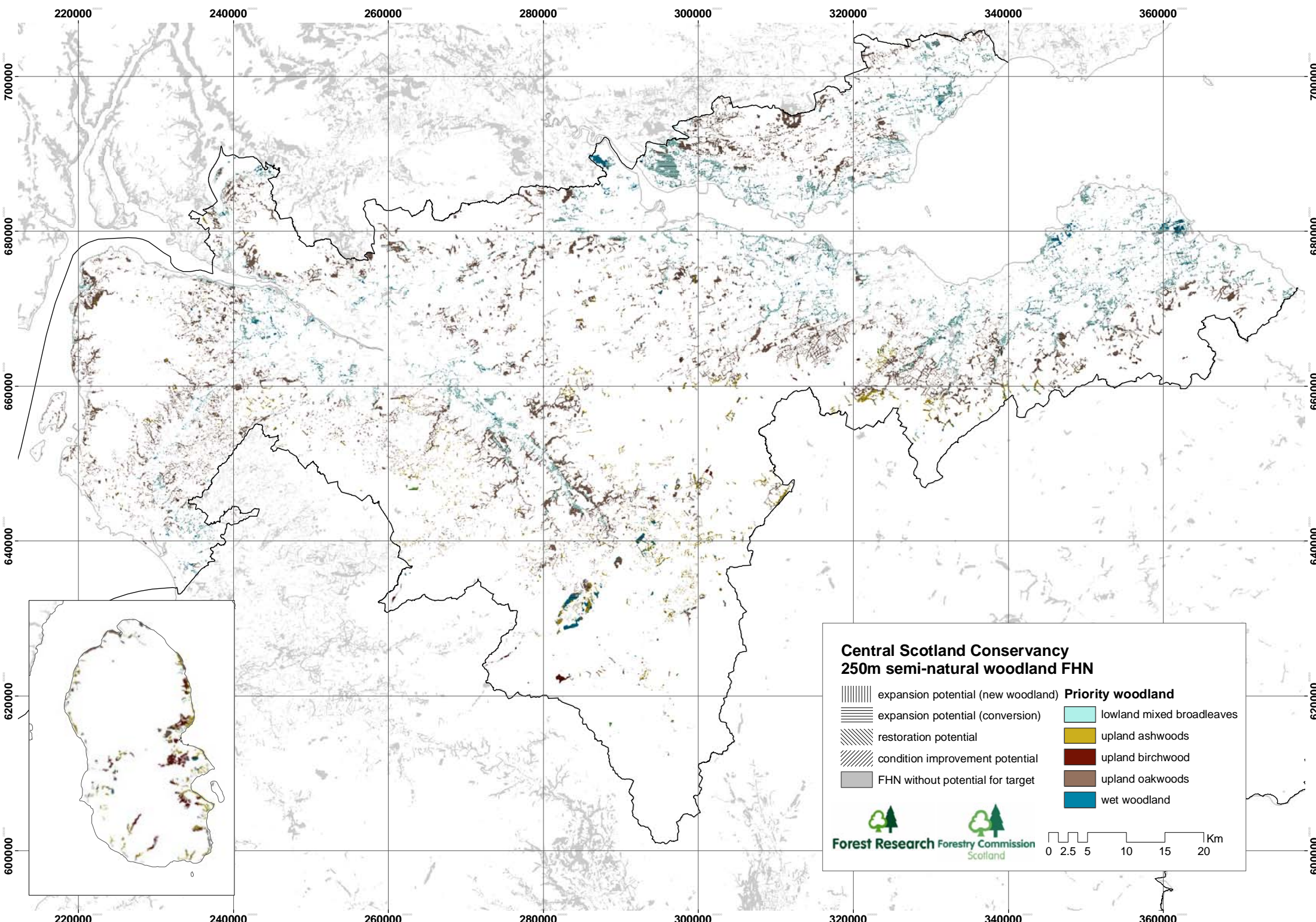
0 2.5 5 10 15 20 Kilometers



Priority woodland

- lowland mixed broadleaves
- native pinewood
- upland ashwoods
- upland birchwood
- upland oakwoods
- wet woodland
- mosaic of upland birchwoods (80%) and upland oakwoods (20%)





Central Scotland Conservancy
250m semi-natural woodland FHN

expansion potential (new woodland)	Priority woodland lowland mixed broadleaves upland ashwoods upland birchwood upland oakwoods wet woodland
expansion potential (conversion)	
restoration potential	
condition improvement potential	
FHN without potential for target	

0 2.5 5 10 15 20 Km

