



## Enclosure

In lowland areas, as we have seen, the field or enclosure pattern can be the dominant landscape characteristic

There are two types of enclosure:

- *Ancient countryside*, which is characterised by irregular field boundaries and walls and boundaries which are very old
- *Planned countryside*, which is much more geometric, based on regular fields which were set out in the 18<sup>th</sup> and 19<sup>th</sup> centuries.



## Enclosure





## Enclosure







## Enclosure



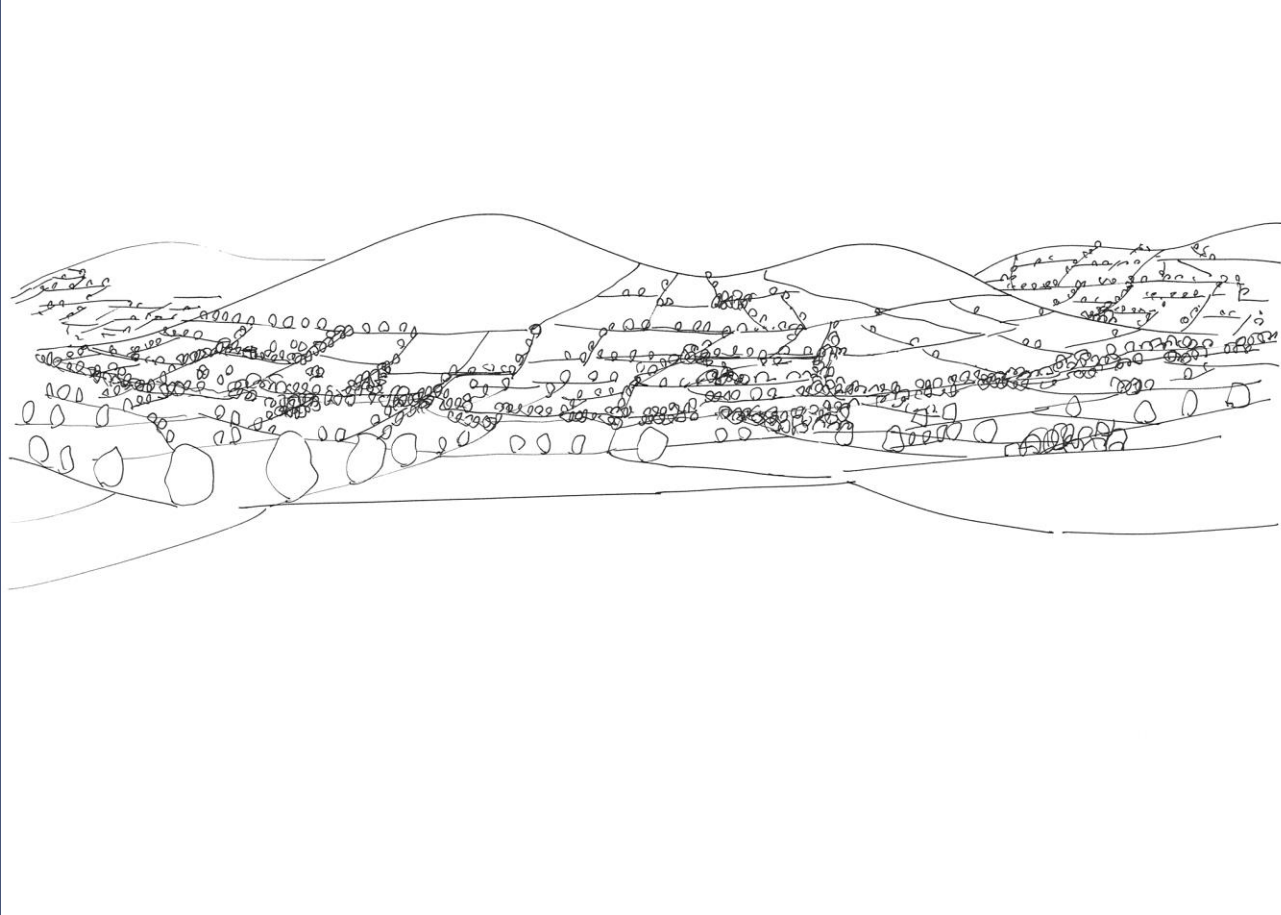


## Enclosure



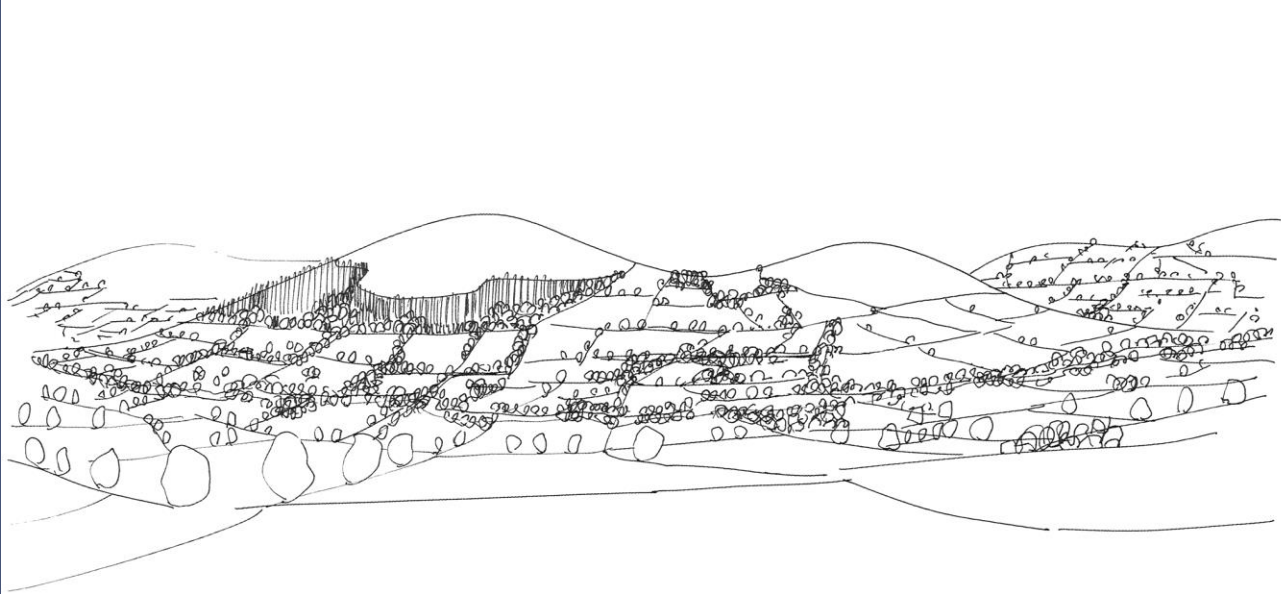


## Enclosure with landform



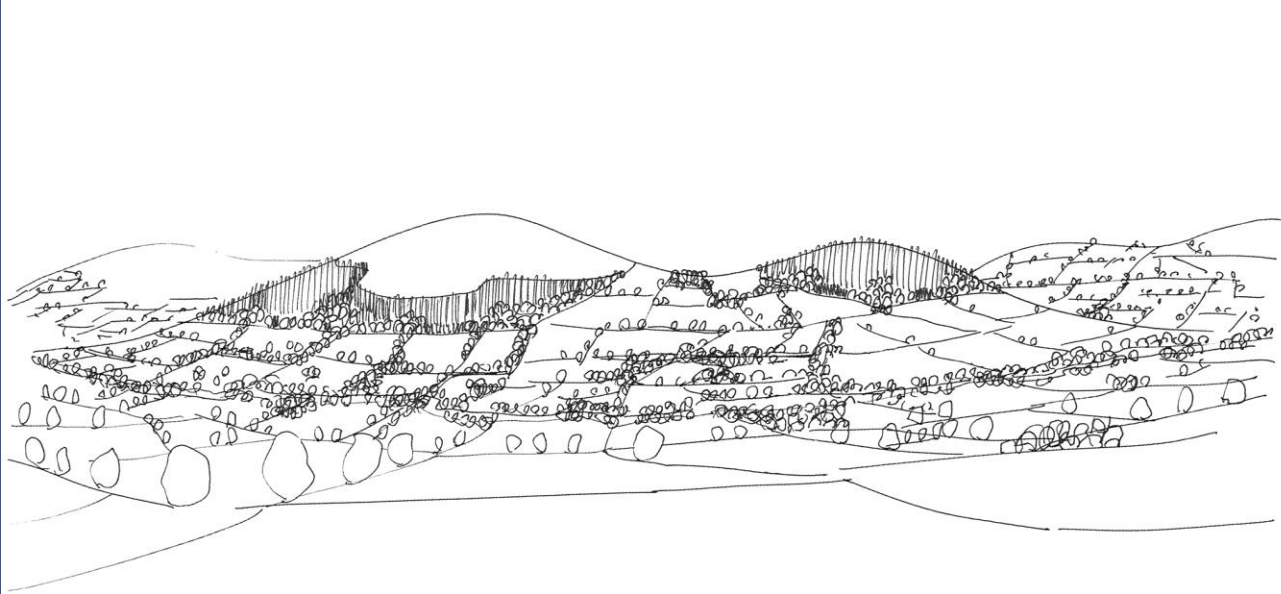


## Enclosure with landform





## Enclosure with landform







## Summary

In landscapes where enclosure is the dominant characteristic, it should be used as the key influence in forest shape

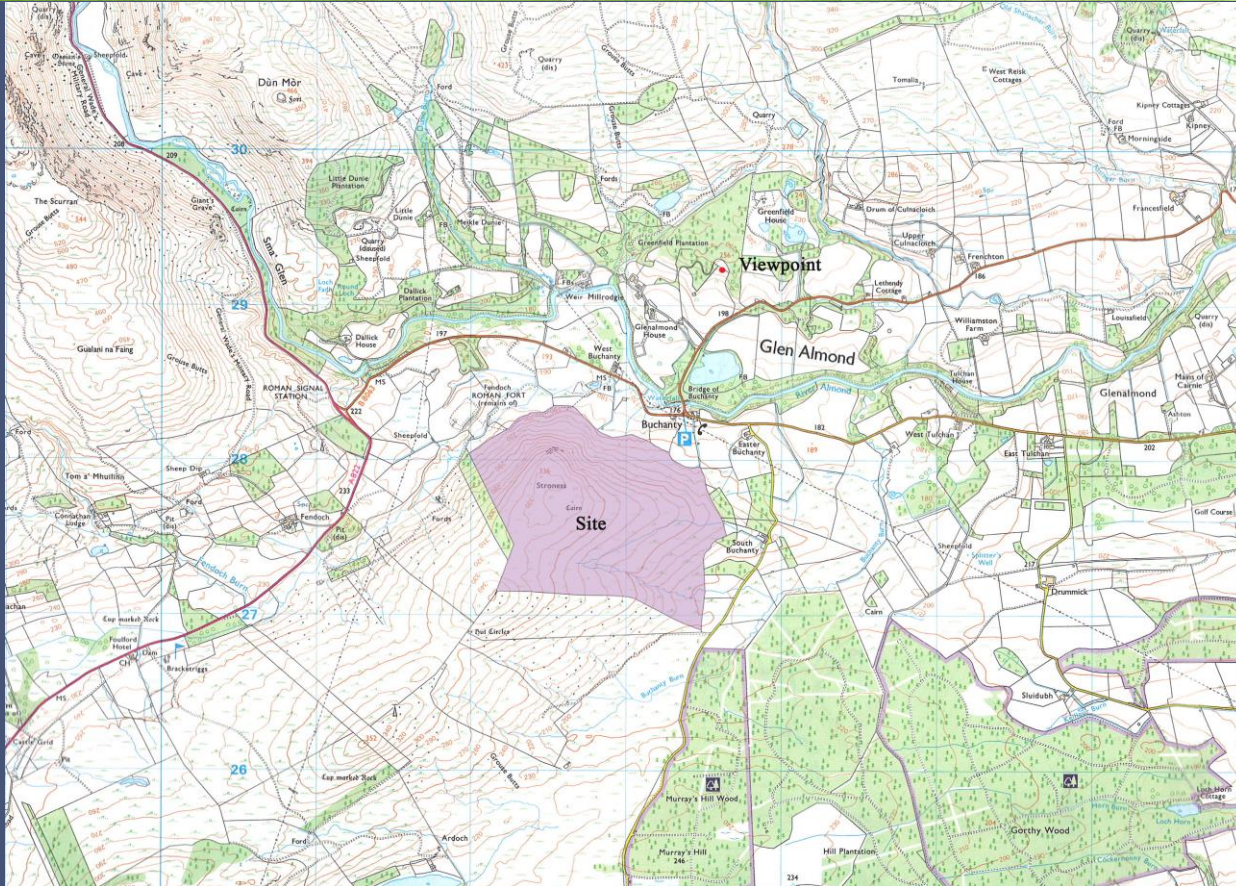
Often you will be working within a landscape which is influenced by both – hills dominated by landform, lowland areas dominated by enclosure pattern

Consider carefully both the shape and relative scale of elements where these two influences meet.



# Workshop 1

Context Photograph





## Shape, Landform and Enclosure

In your groups you are going to prepare the outer shape of a new planting plan in perspective

Begin by looking at the material provided and describing the landscape character of the area

Individually, prepare a visual force analysis on a 1:5000 map then, as a group, agree how that should be transferred to a greyscale perspective

Using your analysis, explore options and decide on a draft outer margin shape for your new woodland.





## Tutor's response



**Shape:** smooth undulating lowland grassland contrasts with hill ridge that has areas of rugged landform and more upland vegetation pattern

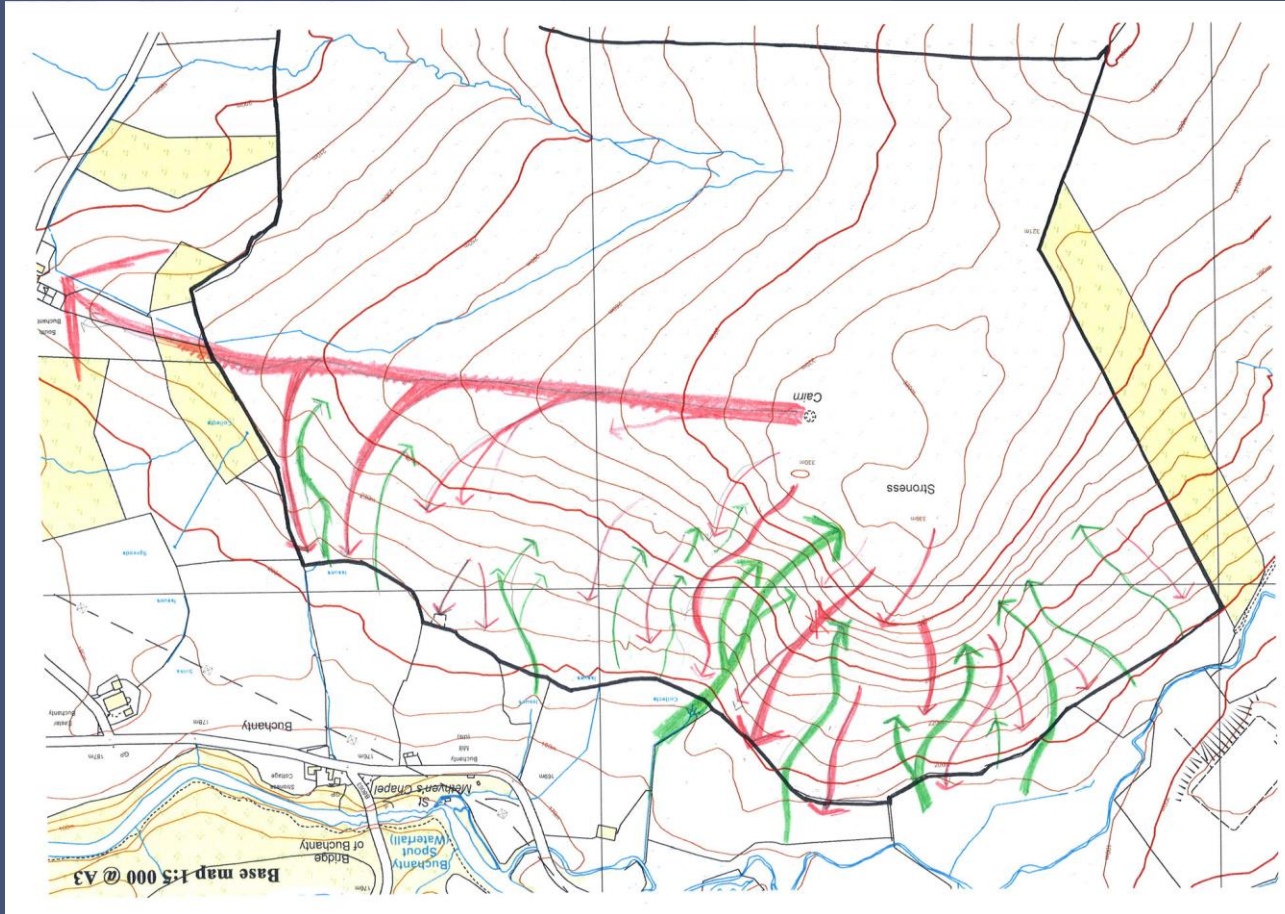
**Scale:** the enclosure of the ridge captures a medium scale scene in a larger scale landscape

**Diversity:** policy woodland, forests and mosaic of moorland vegetation contribute diversity





## Tutor's response





## Tutor's response

