



## Visual diversity

We have looked at shape and scale, and how we can use these terms to understand and describe landscape character

Now we are going to look at visual diversity.

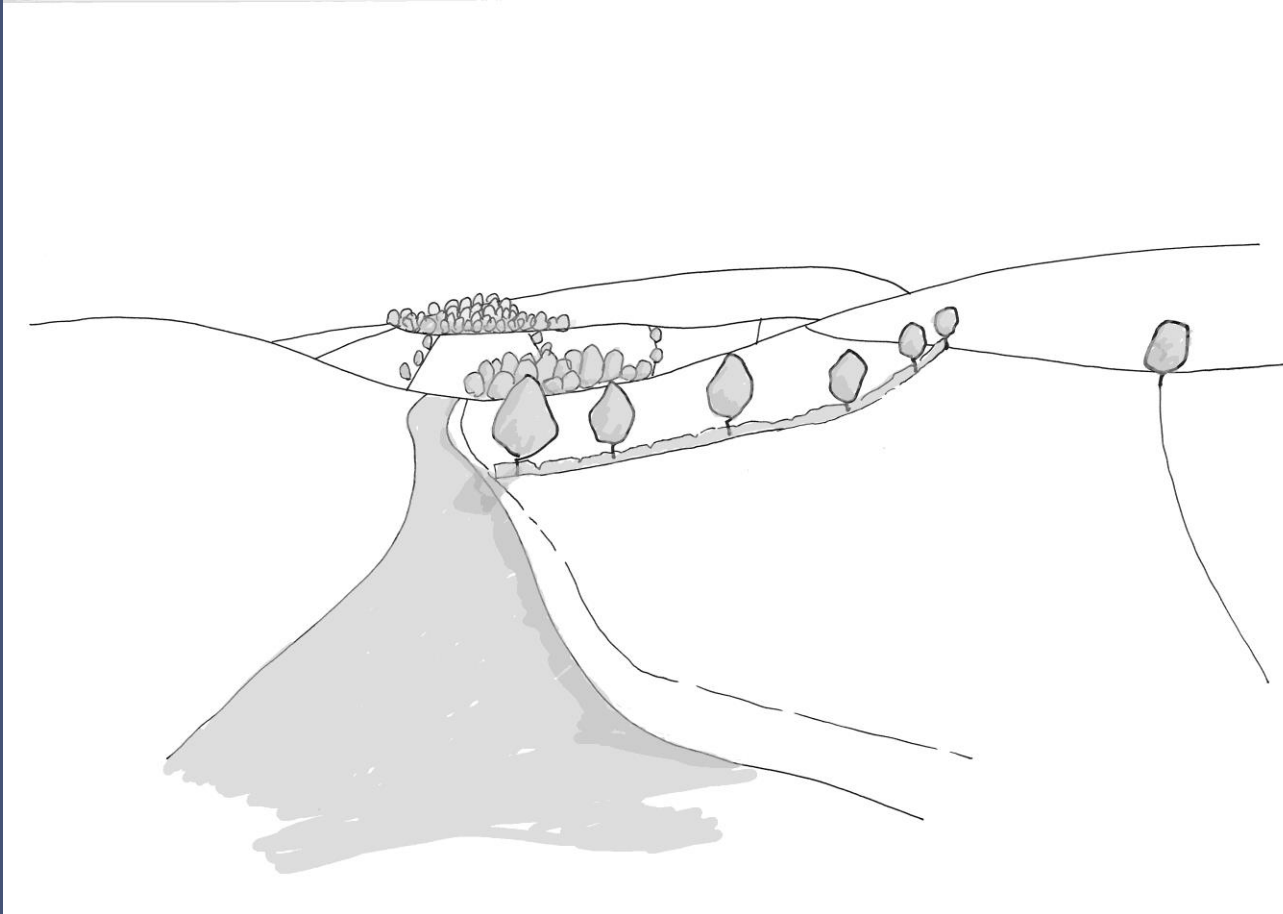


## Visual diversity

Visual diversity is the number of different elements in the landscape, and the degree of visual complexity this generates.

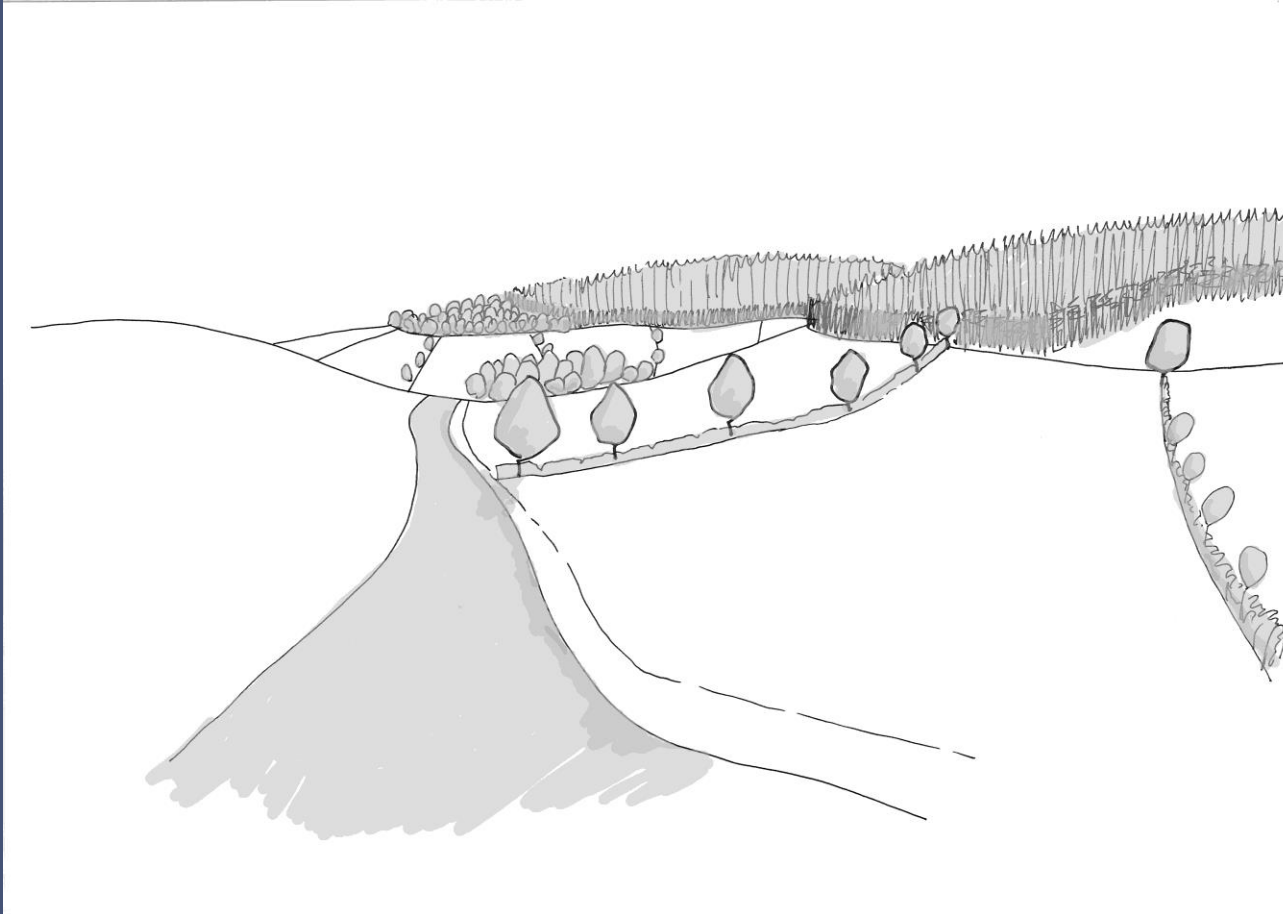


## Visual diversity



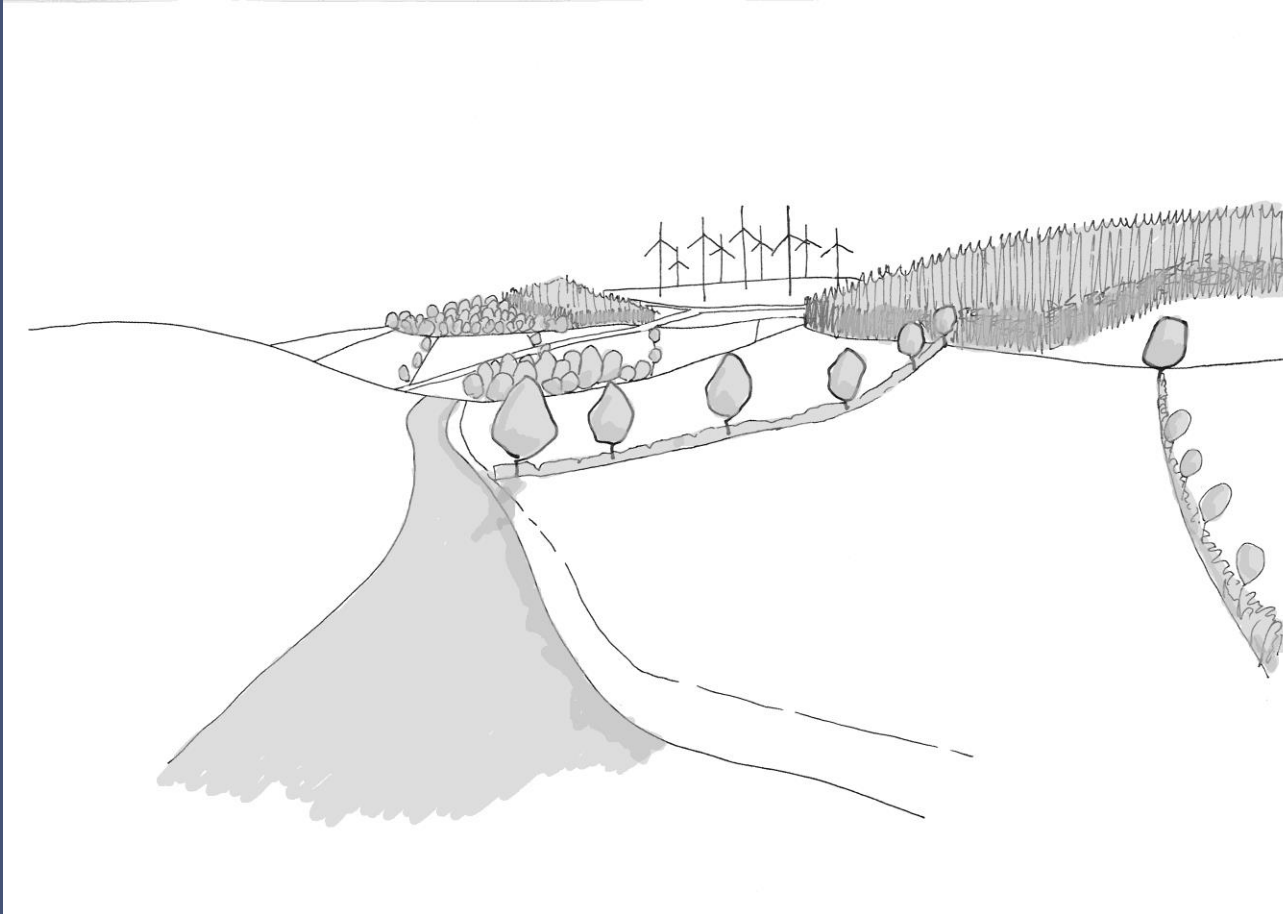


## Visual diversity



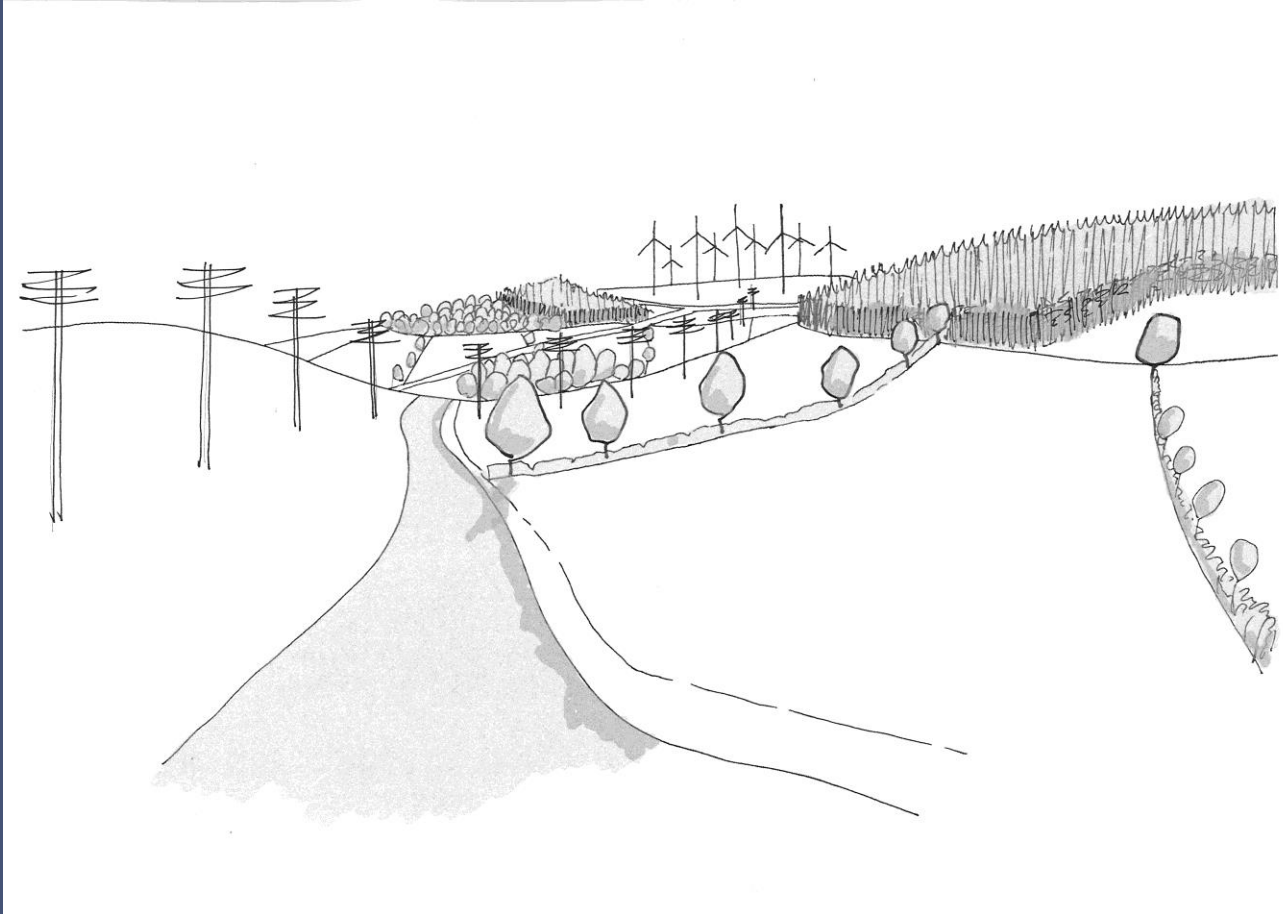


## Visual diversity





## Visual diversity





## Visual diversity







## Visual diversity







## Summary

Different landscape characters have different degrees of diversity; some are simple, some are complex

More visual diversity is not necessarily better

Simple landscapes can be dramatic

Complex landscapes can become over-cluttered.



## Exercise 1c: Visual diversity

In your groups...

Analyse and describe the landscape in terms of the **visual diversity** of these three images

Provide brief answers beneath the question on each page of the questionnaire

Also, now consider together your responses to shape, scale and diversity and answer the specific final question at the bottom of each page.



## Exercise 1: Photo 1 - Tutor feedback





## Exercise 1: Photo 2 - Tutor feedback







## Exercise 1: Photo 3 - Tutor feedback





## Landscape character – summing up

Landscape character is not a form of value judgement - the shape, scale and visual diversity is simply a record of what is there

When we read landscape character, we are identifying the dominant characteristics

We use these characteristics to identify what makes a landscape distinctive...





## Landscape character – summing up

We assess the shape, scale, and visual diversity of landform, waterbodies, vegetation pattern, even infrastructure and settlement

We can use these terms to explain and describe landscape character in an objective and informed way.