

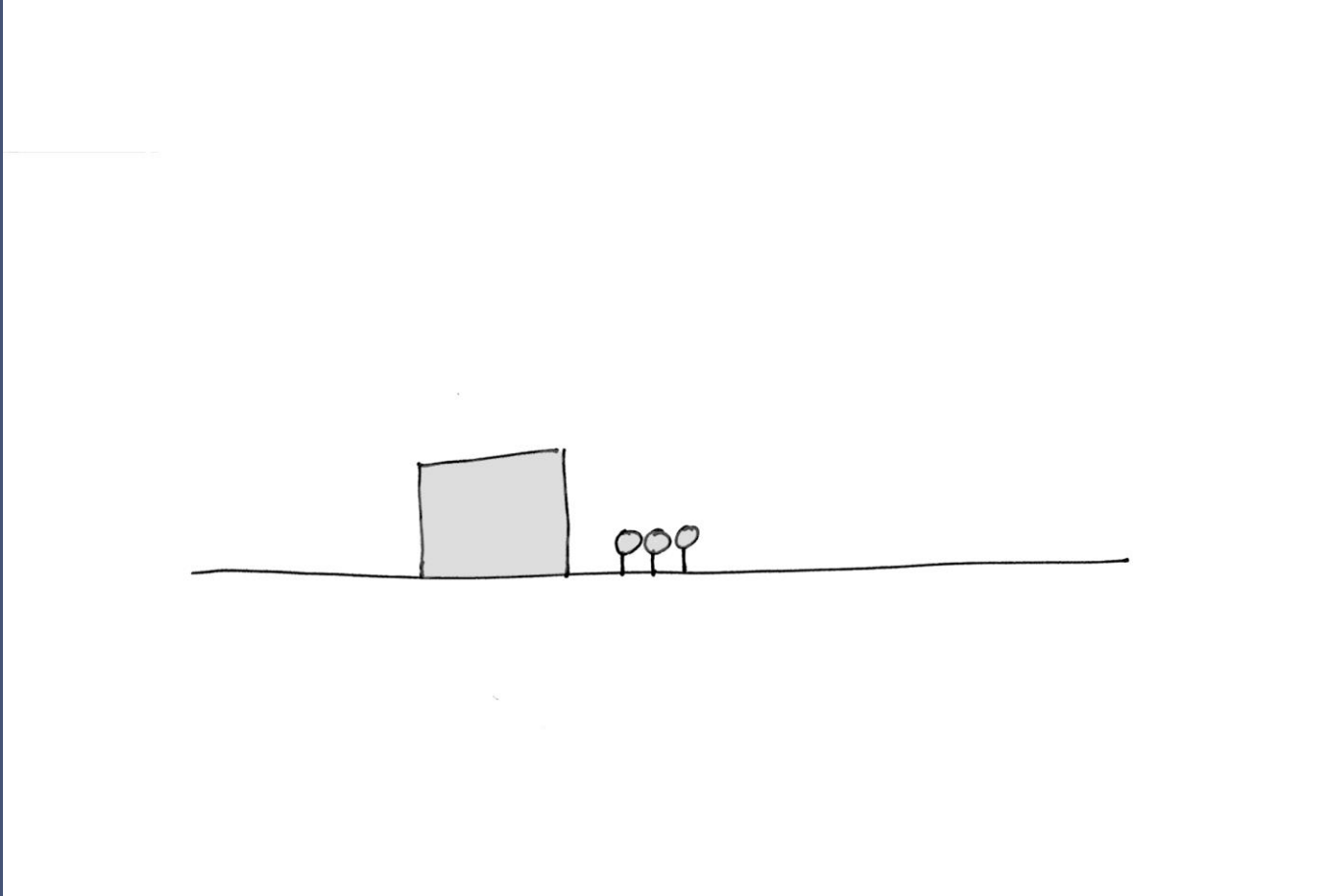


Assessing scale



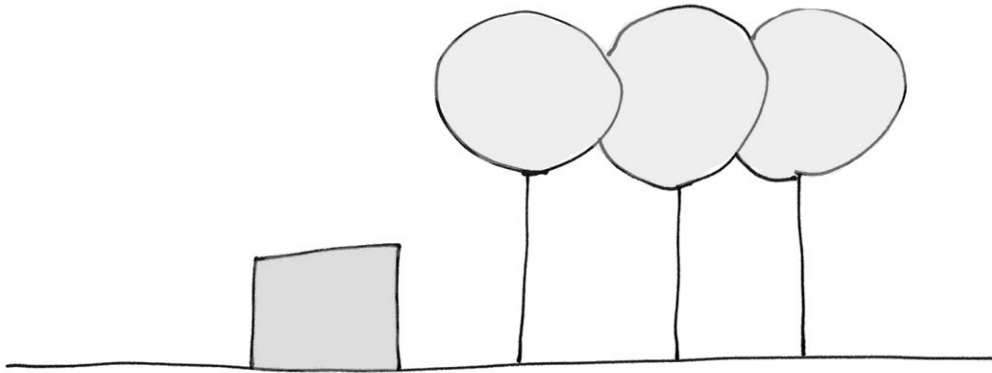


Assessing scale



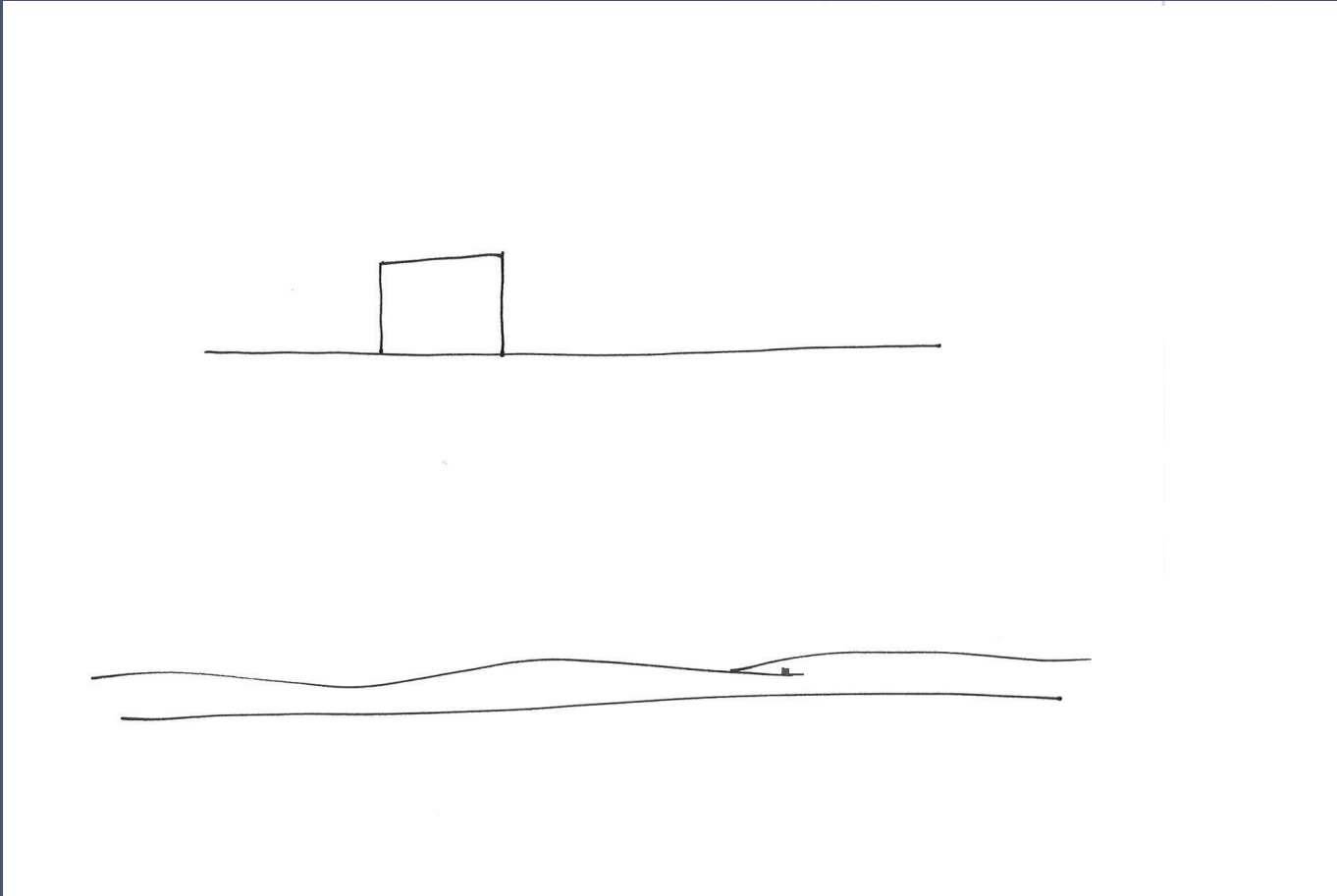


Assessing scale



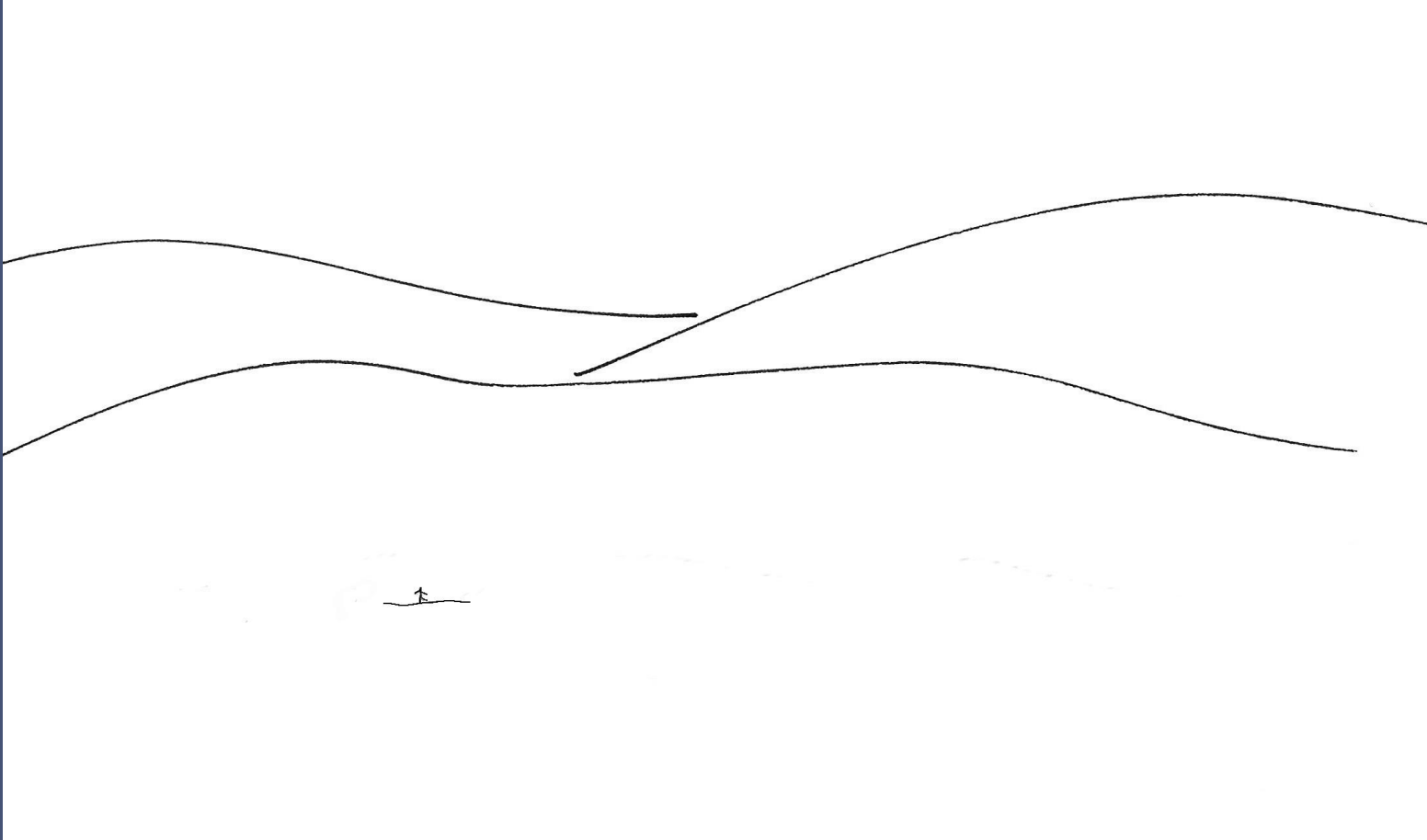


Assessing scale





Assessing scale





Assessing scale





Assessing scale



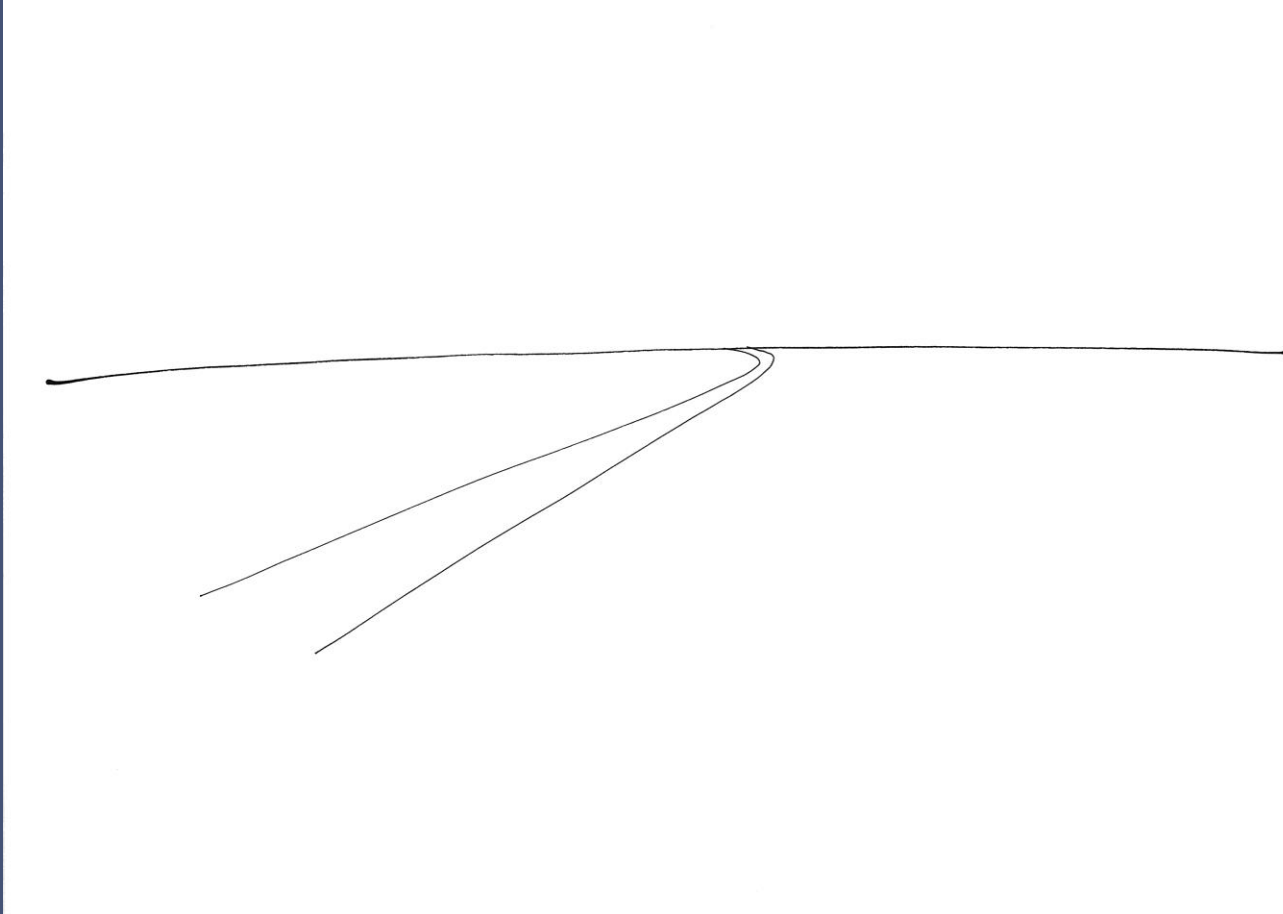


Assessing scale



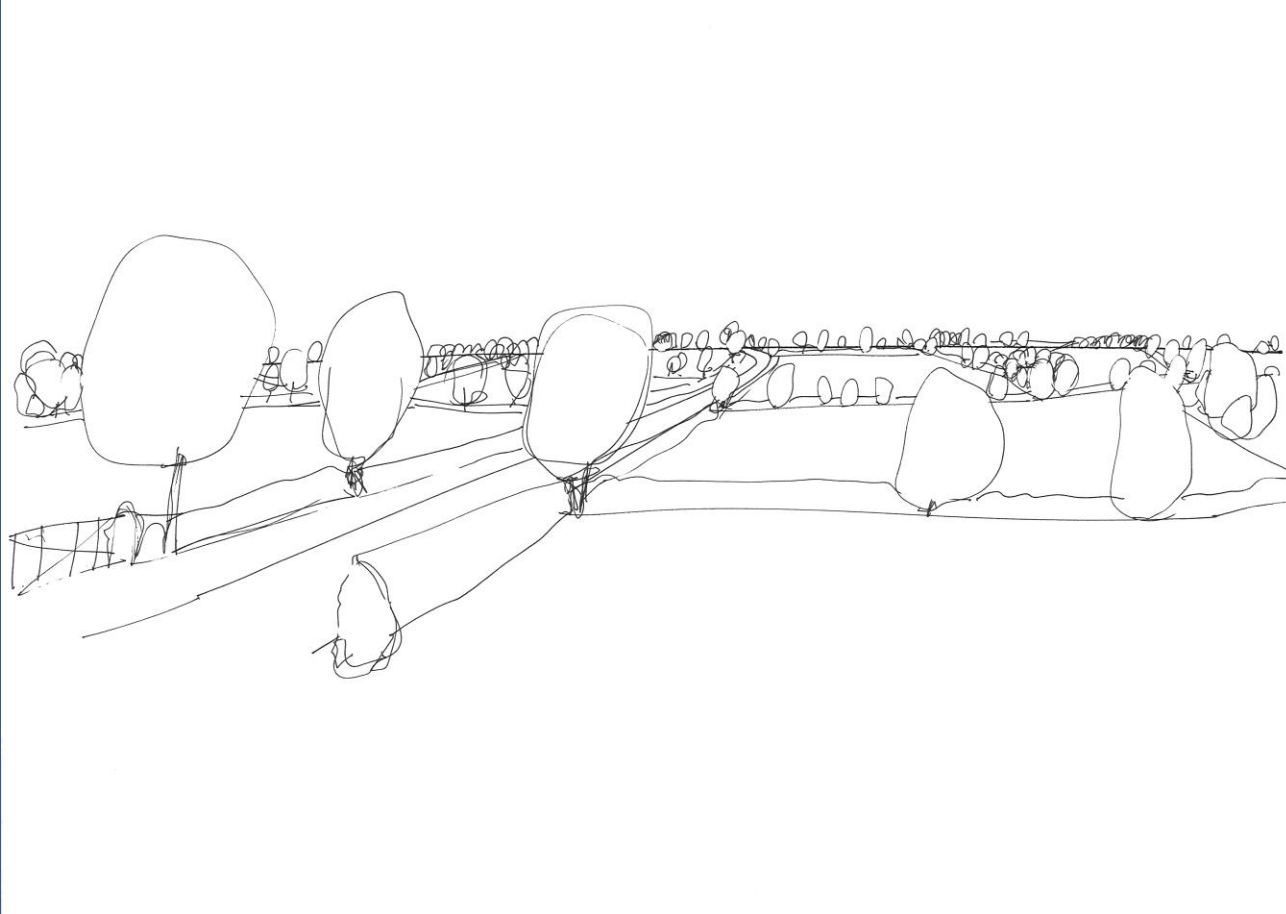


Assessing openness and enclosure



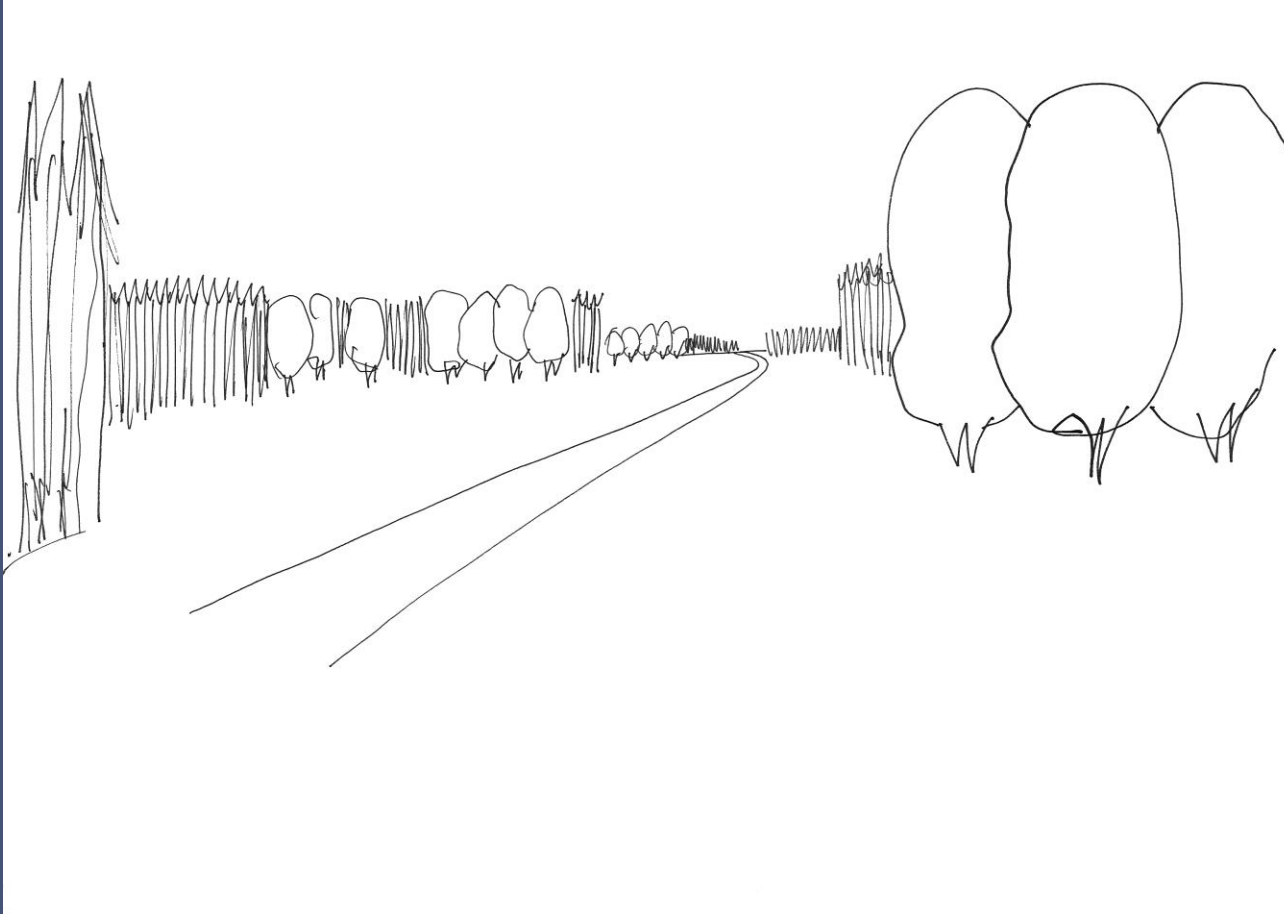


Assessing openness and enclosure



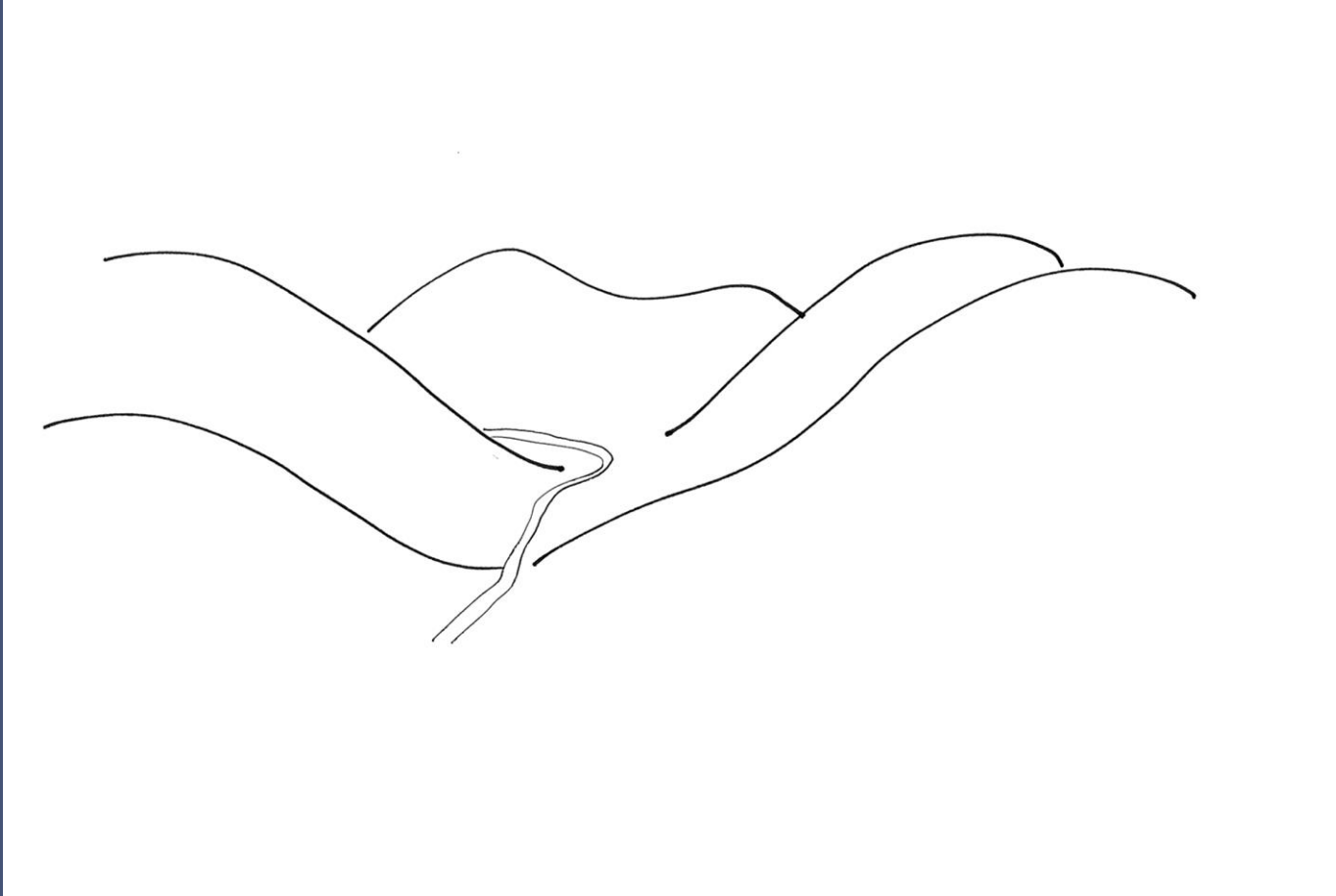


Assessing openness and enclosure





Assessing openness and enclosure





Assessing openness and enclosure





Summary

Scale is firstly assessed relative to landform

Landform can be large scale or small scale - or something in between

But it can be altered by the pattern of land use which can create enclosure

The more enclosure created, the more the landscape is experienced as smaller spaces, and therefore perceived to be smaller in scale

Woodland can reinforce enclosure created by landform.



Exercise 1b: Scale

In your groups...

Analyse and describe the landscape with respect to its relative **scale** to the viewer in these three images

Also, the experience of openness/enclosure

Provide brief answers beneath the question on each page of the questionnaire.