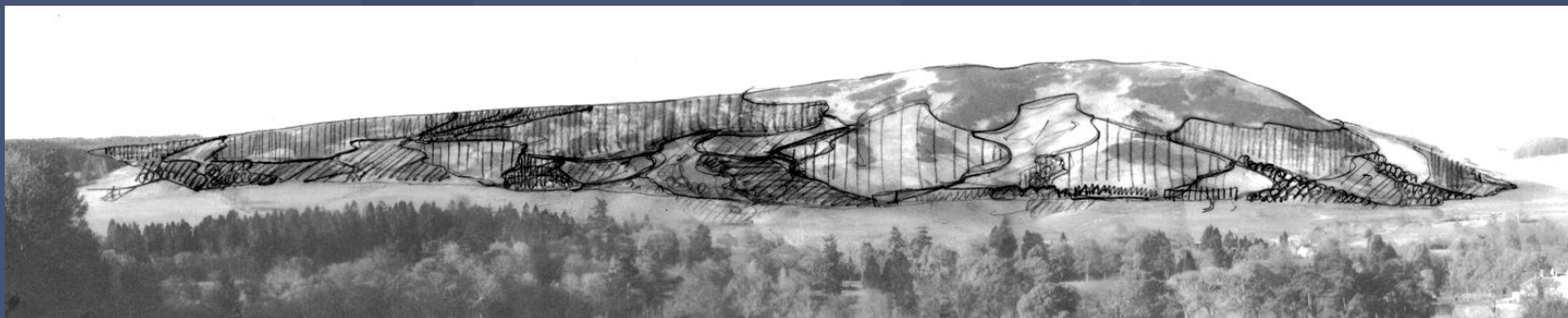




Tutor's response





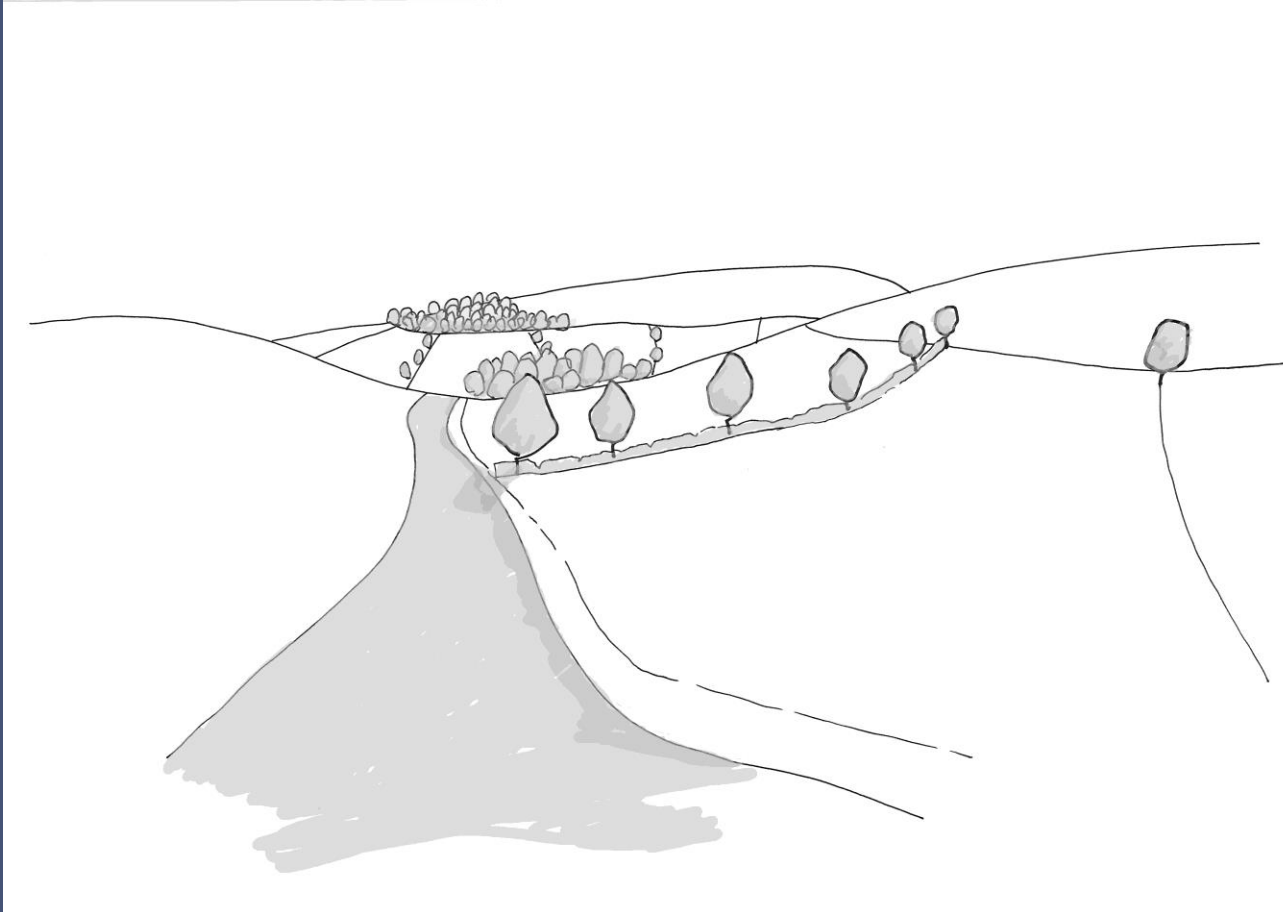
Unity

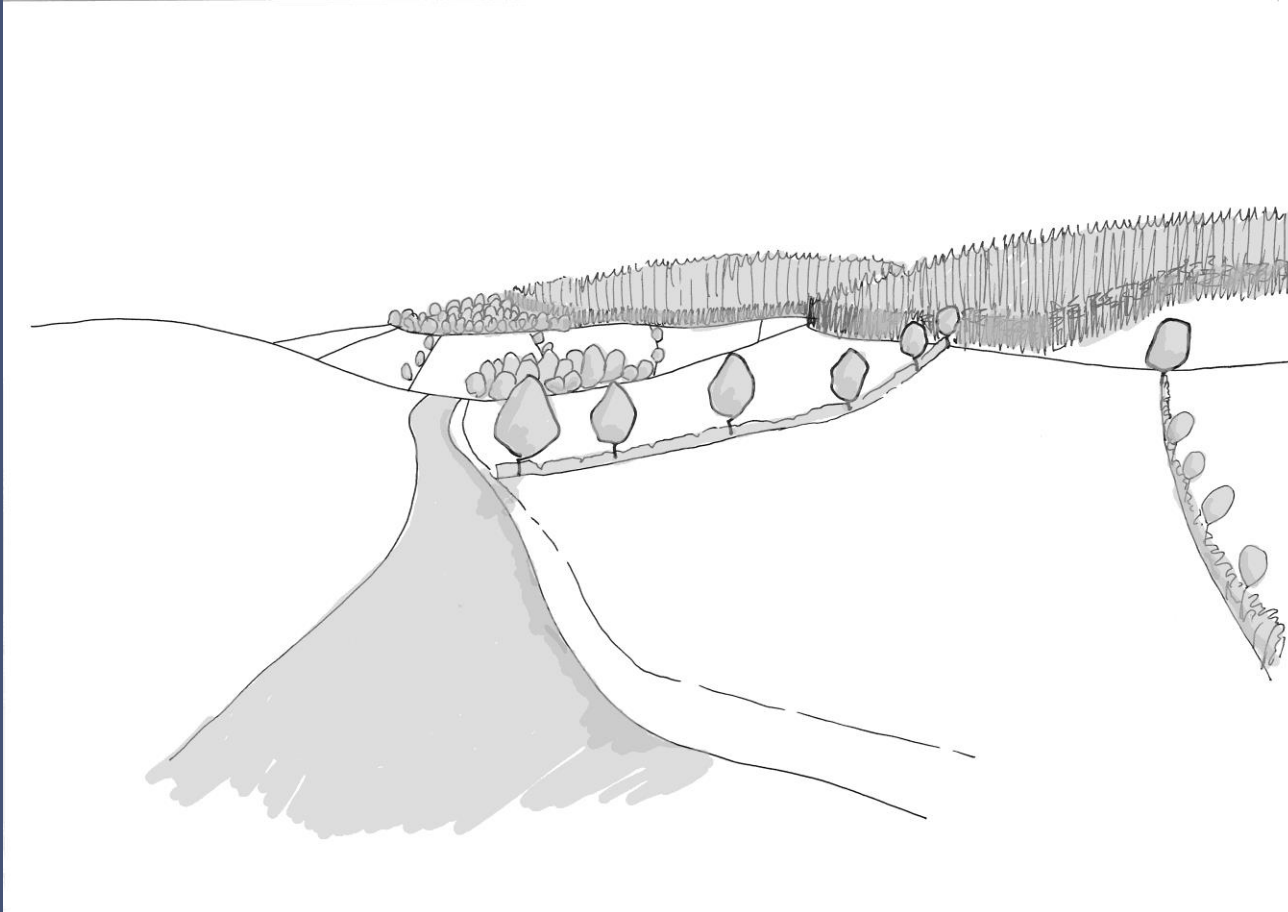
We are now going to explore unity

An accumulation of poorly designed elements in the landscape often leads to visual clutter and fragmentation.



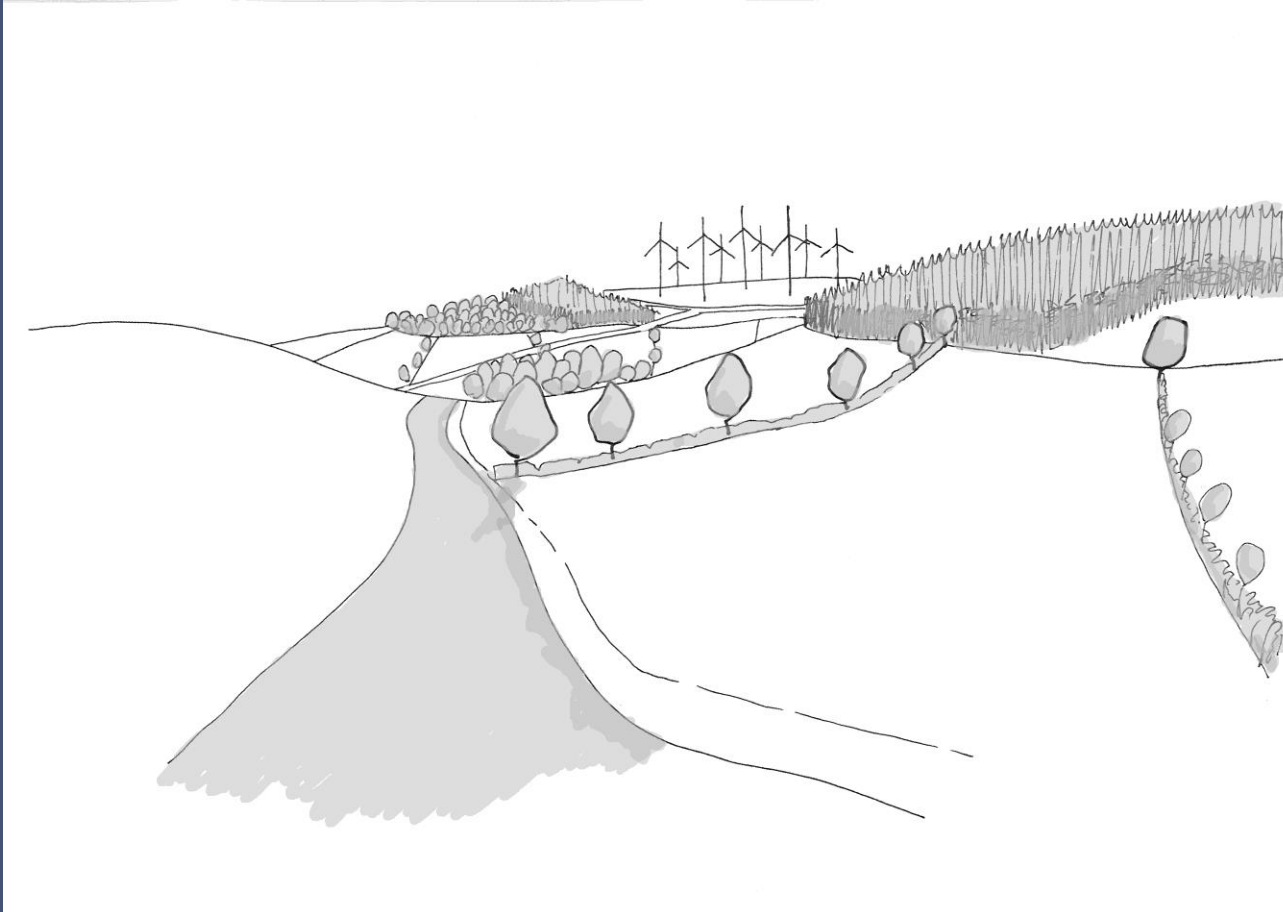
Forest design principles





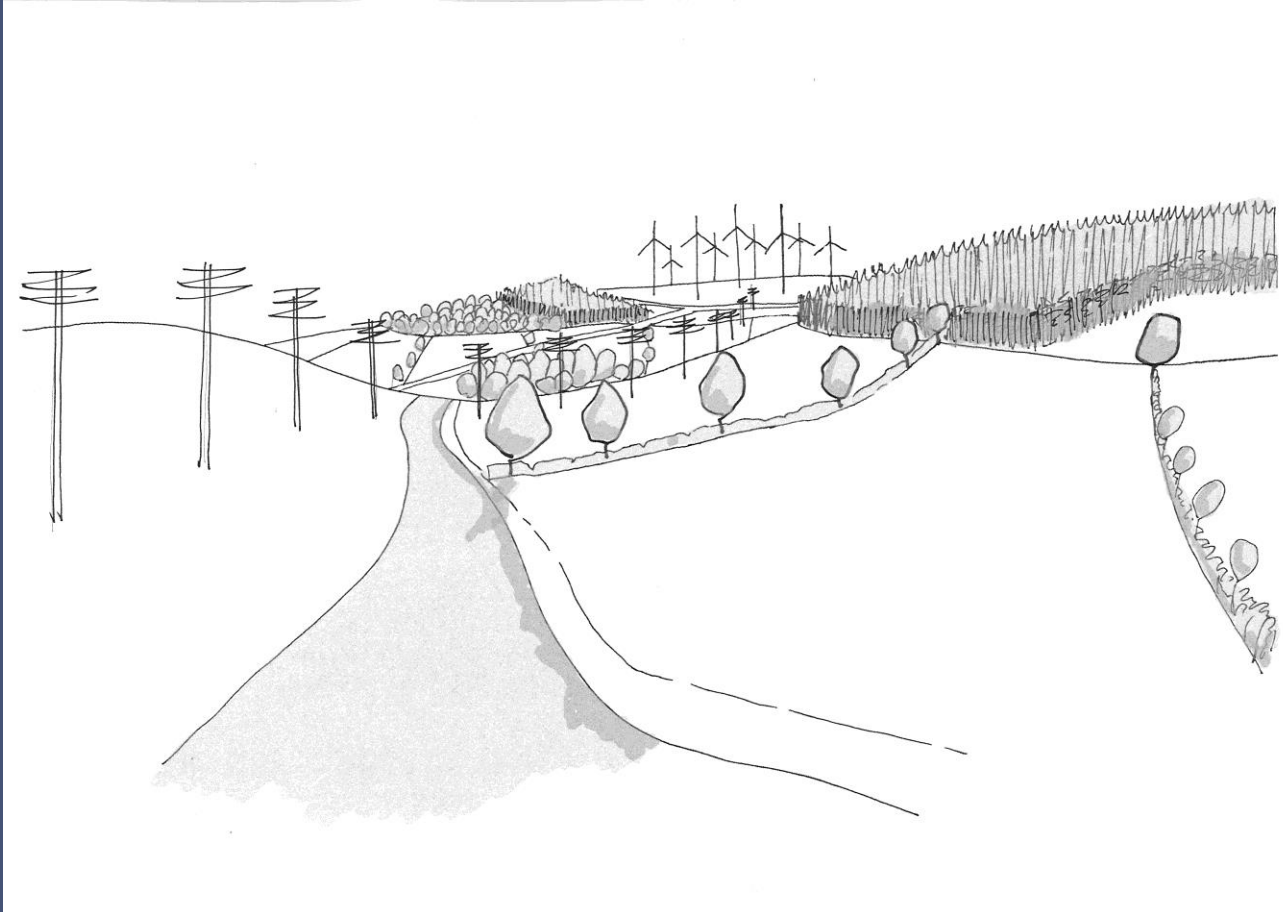


Forest design principles



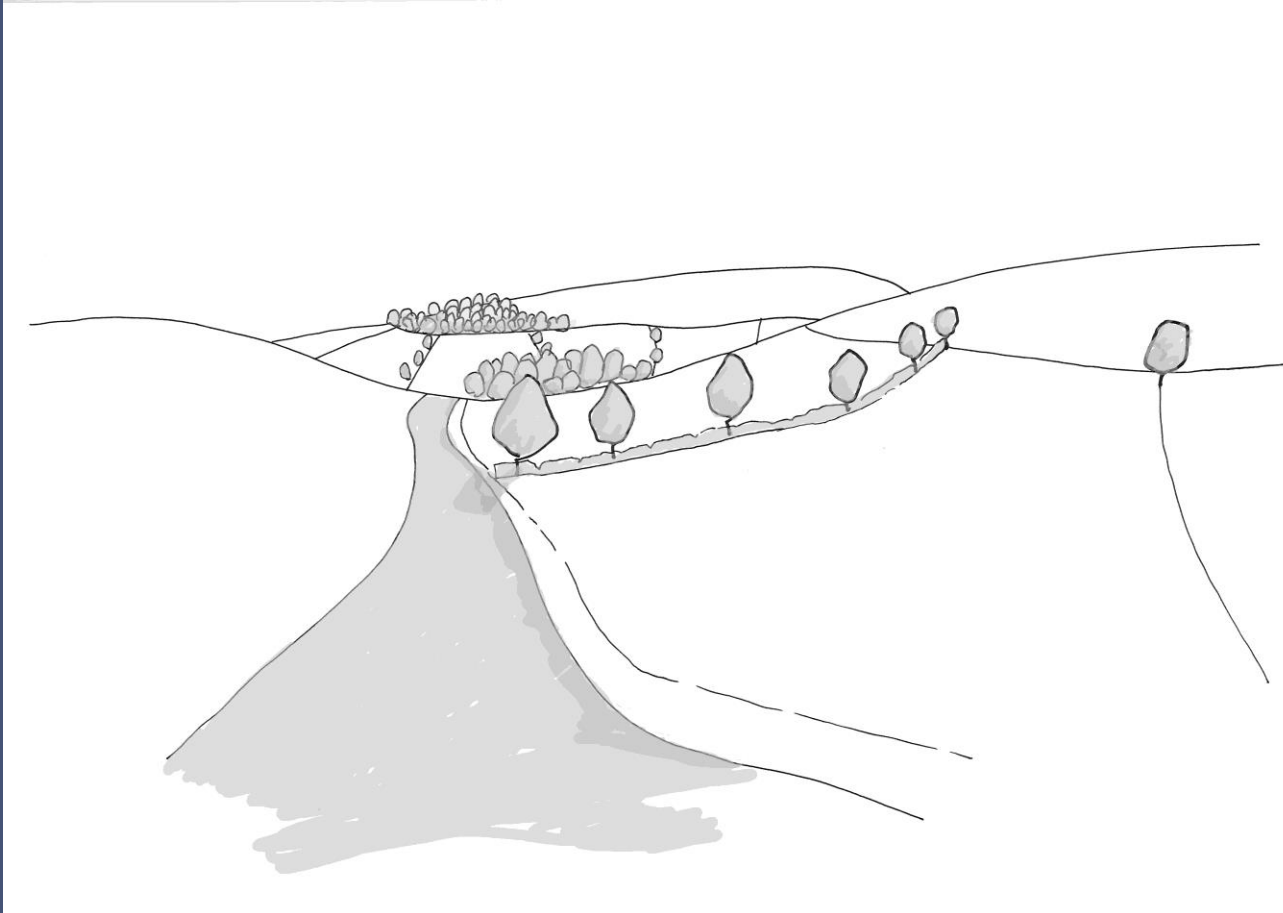


Forest design principles



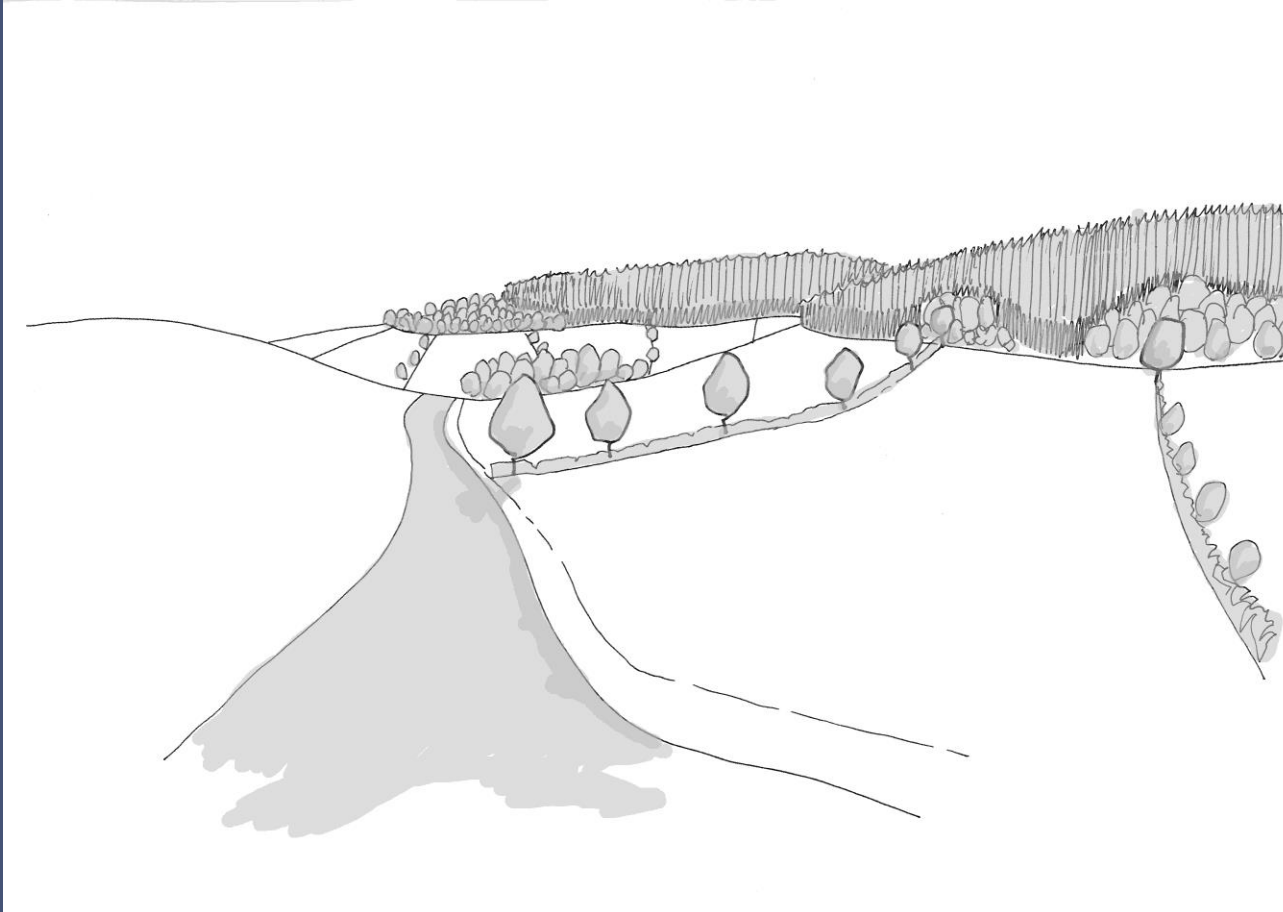


Unity



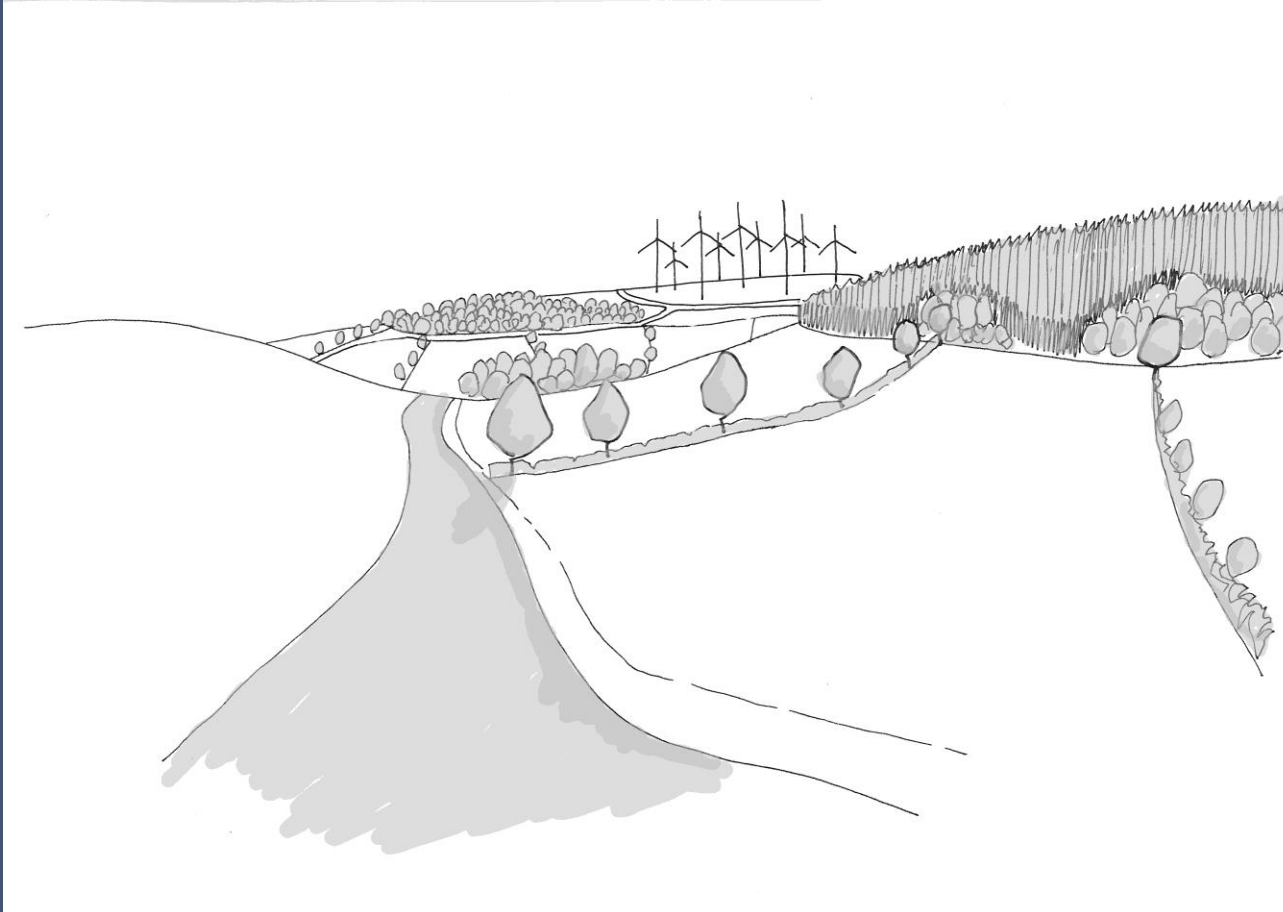


Unity



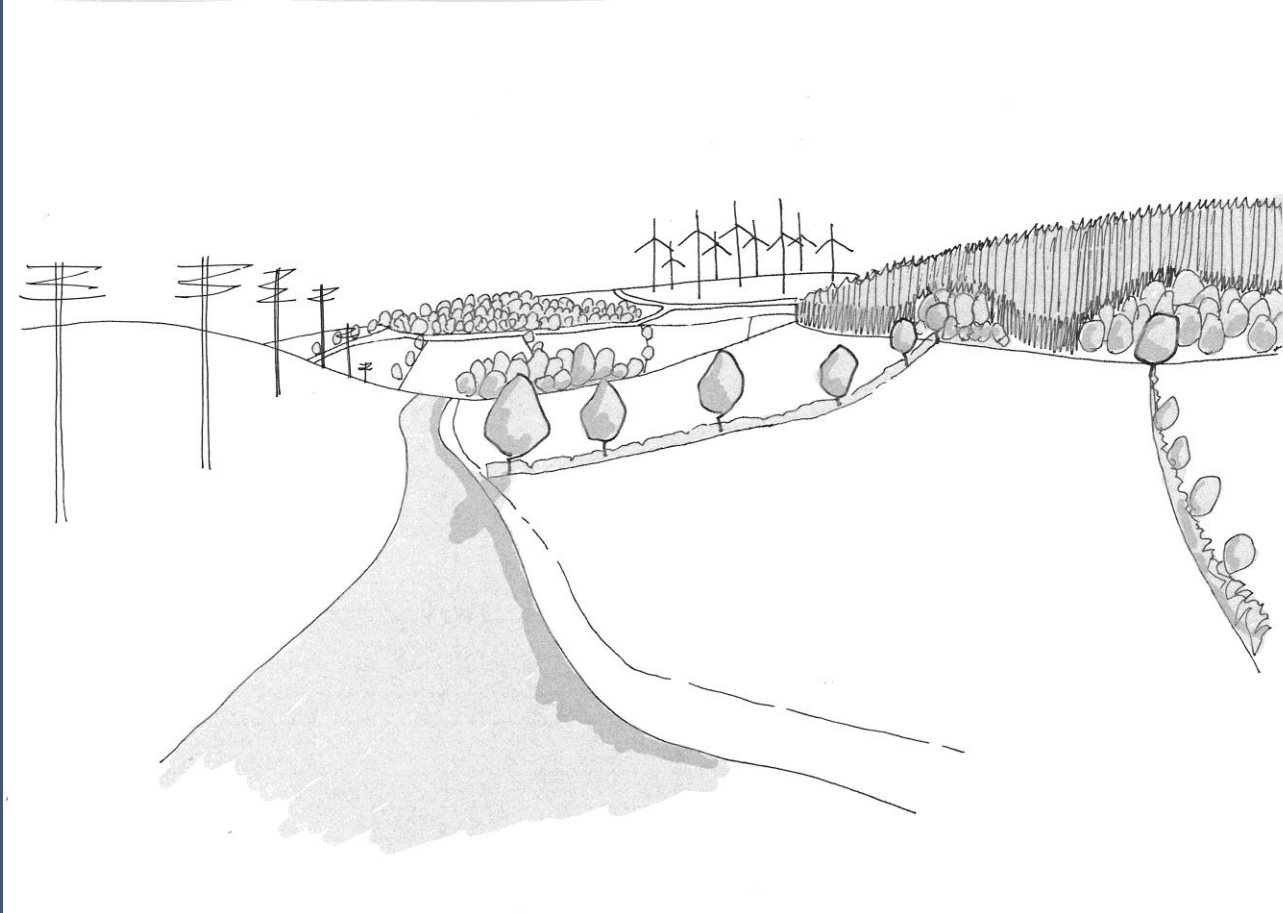


Unity



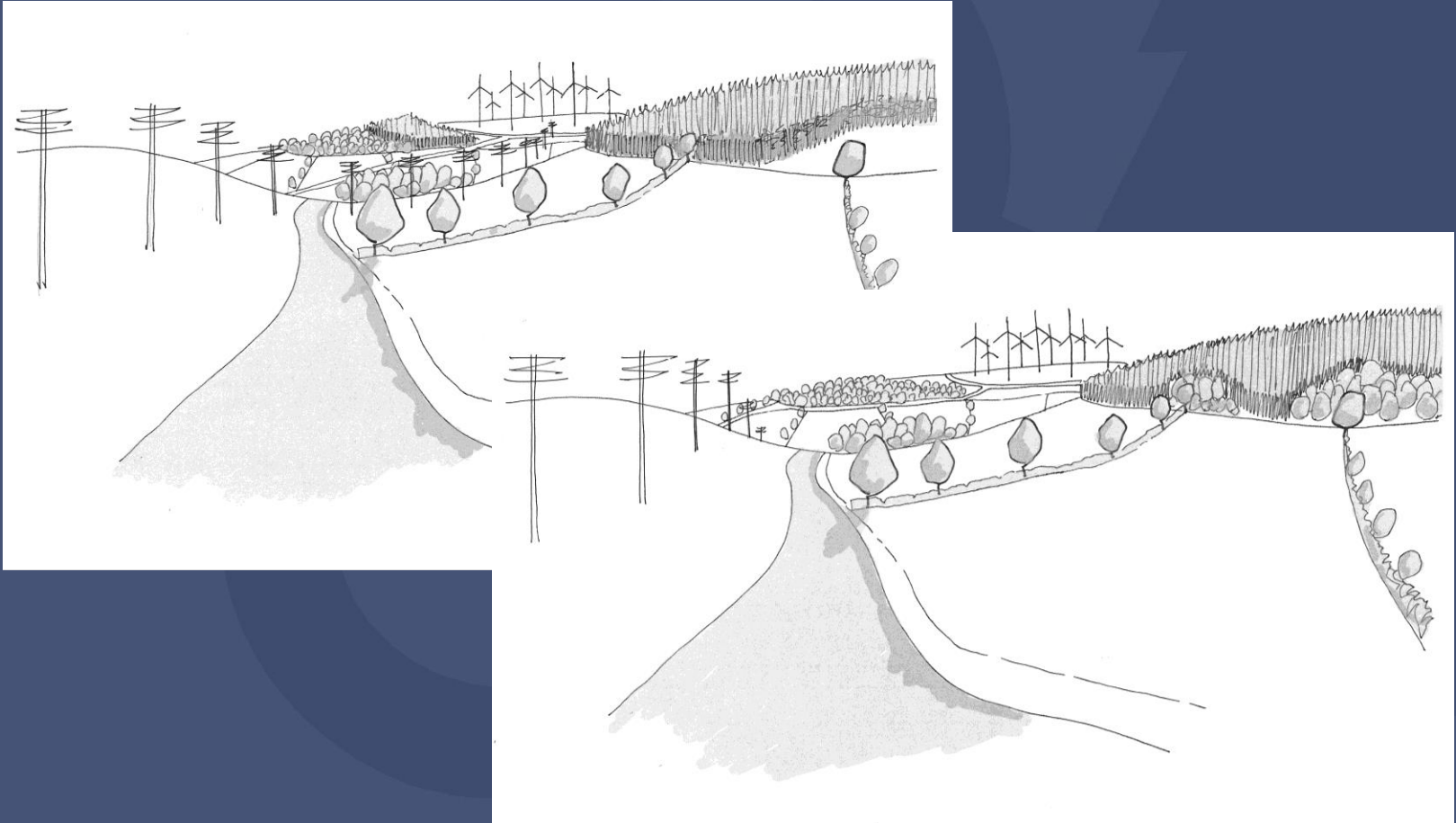


Unity





Unity





Unity

‘Unity’ means that the component parts of a landscape or a design work together in harmony

Elements complement each other and work together to reinforce character.



Unity in forests

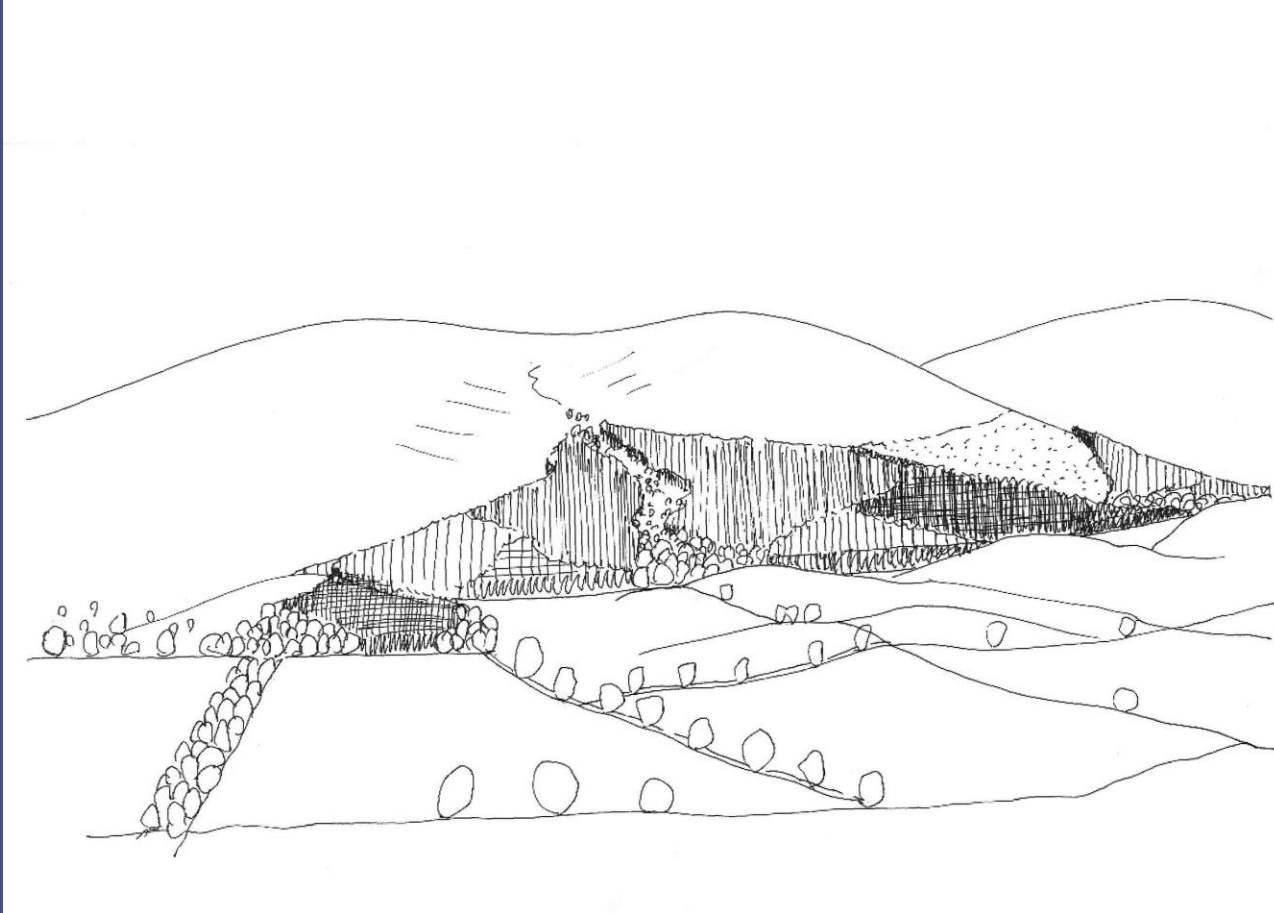
‘Unity’ in forest design means that the component parts of a woodland contribute harmoniously to the whole effect or composition

Unity is easier to achieve if all the components can be recognised as having an underlying rationale

Unity is also easier to achieve if the components are clearly seen to work together to respond positively to the landscape character.

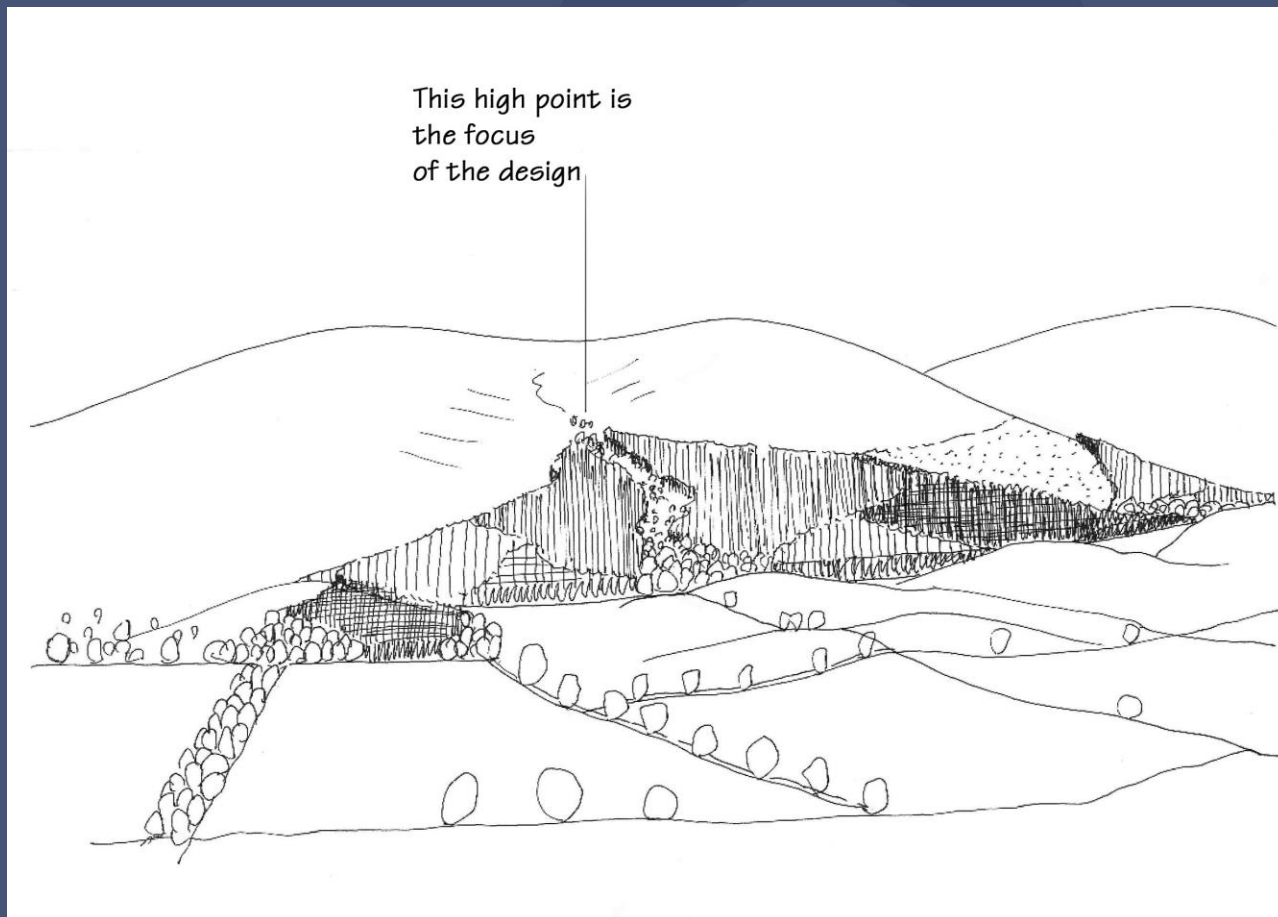


Unity in forests



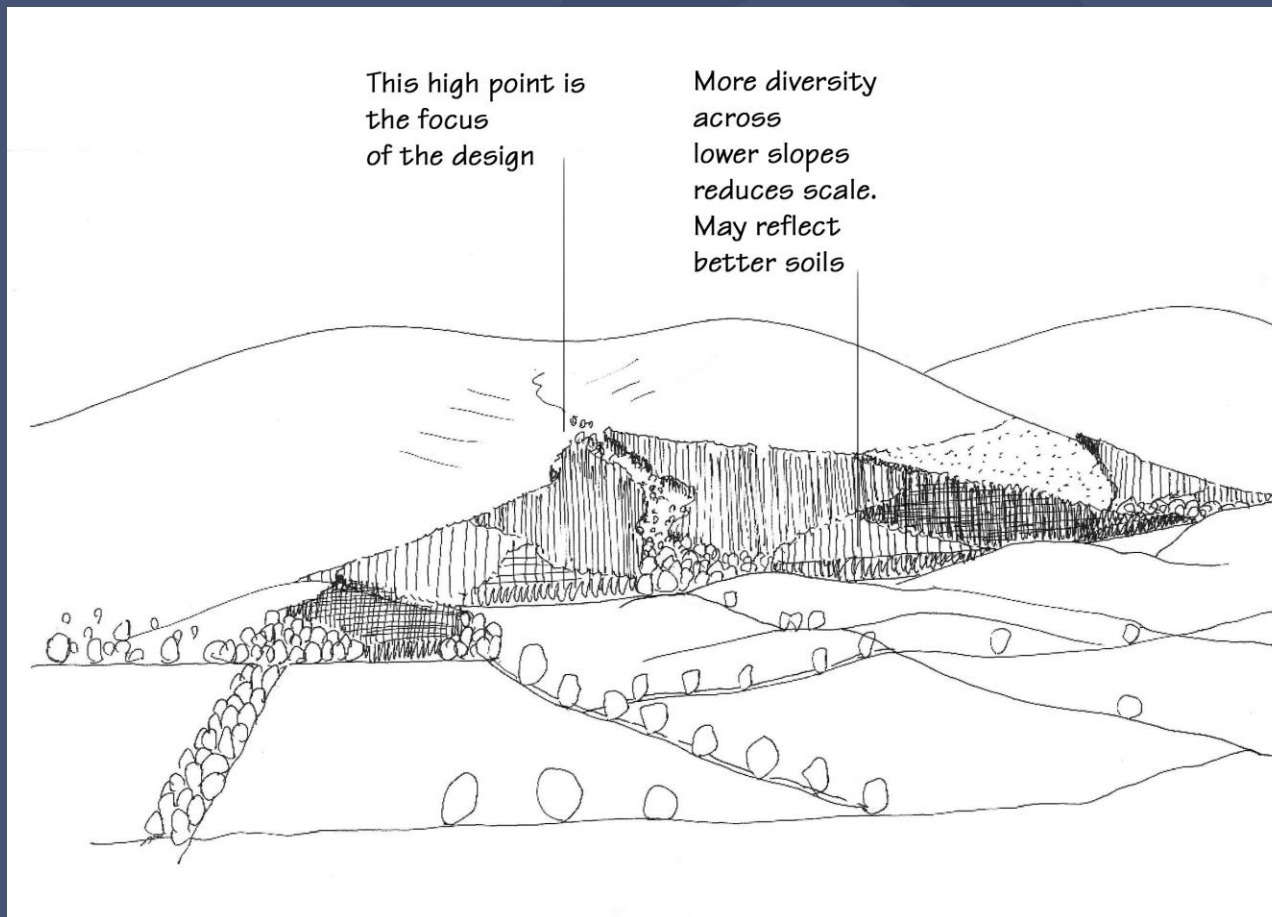


Unity in forests



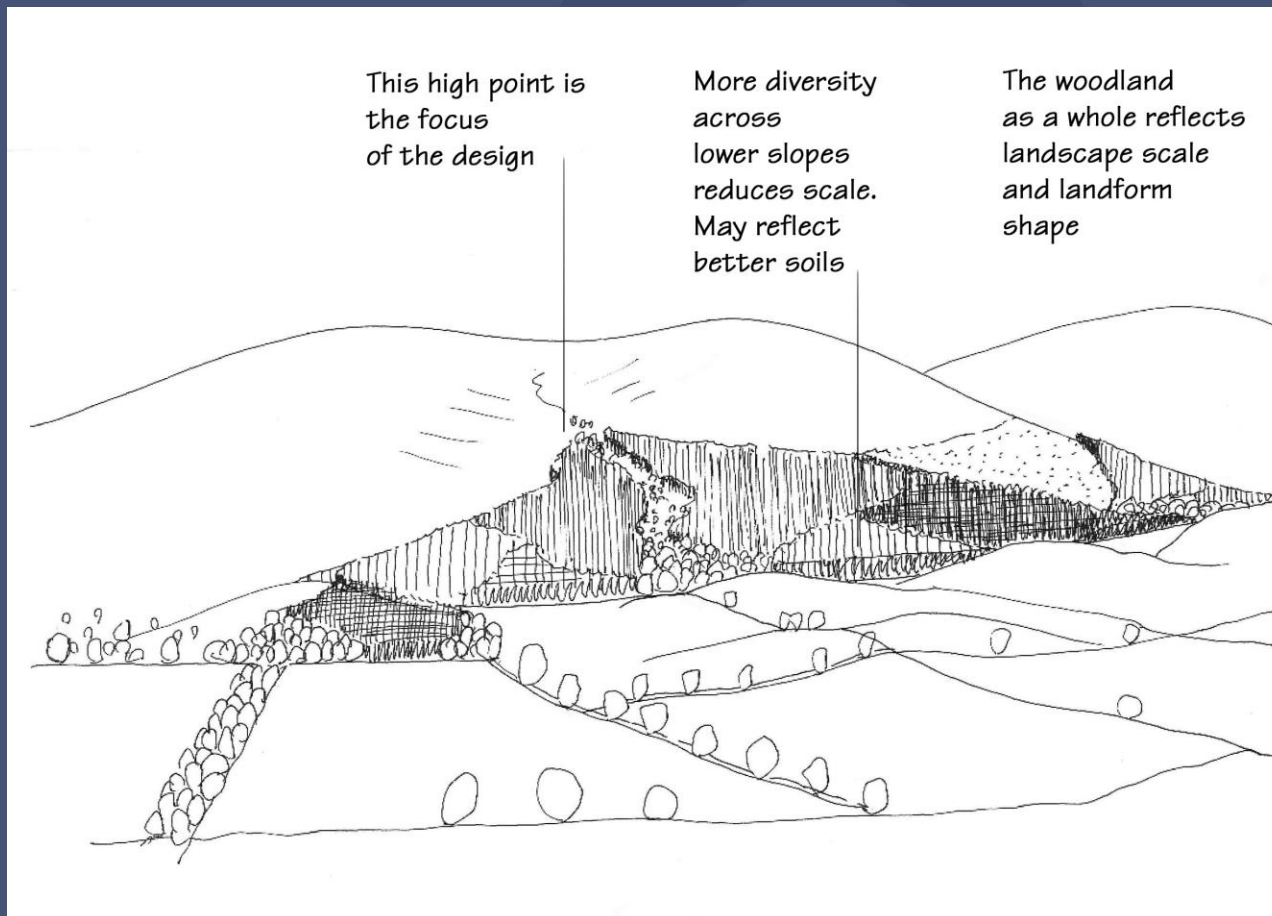


Unity in forests



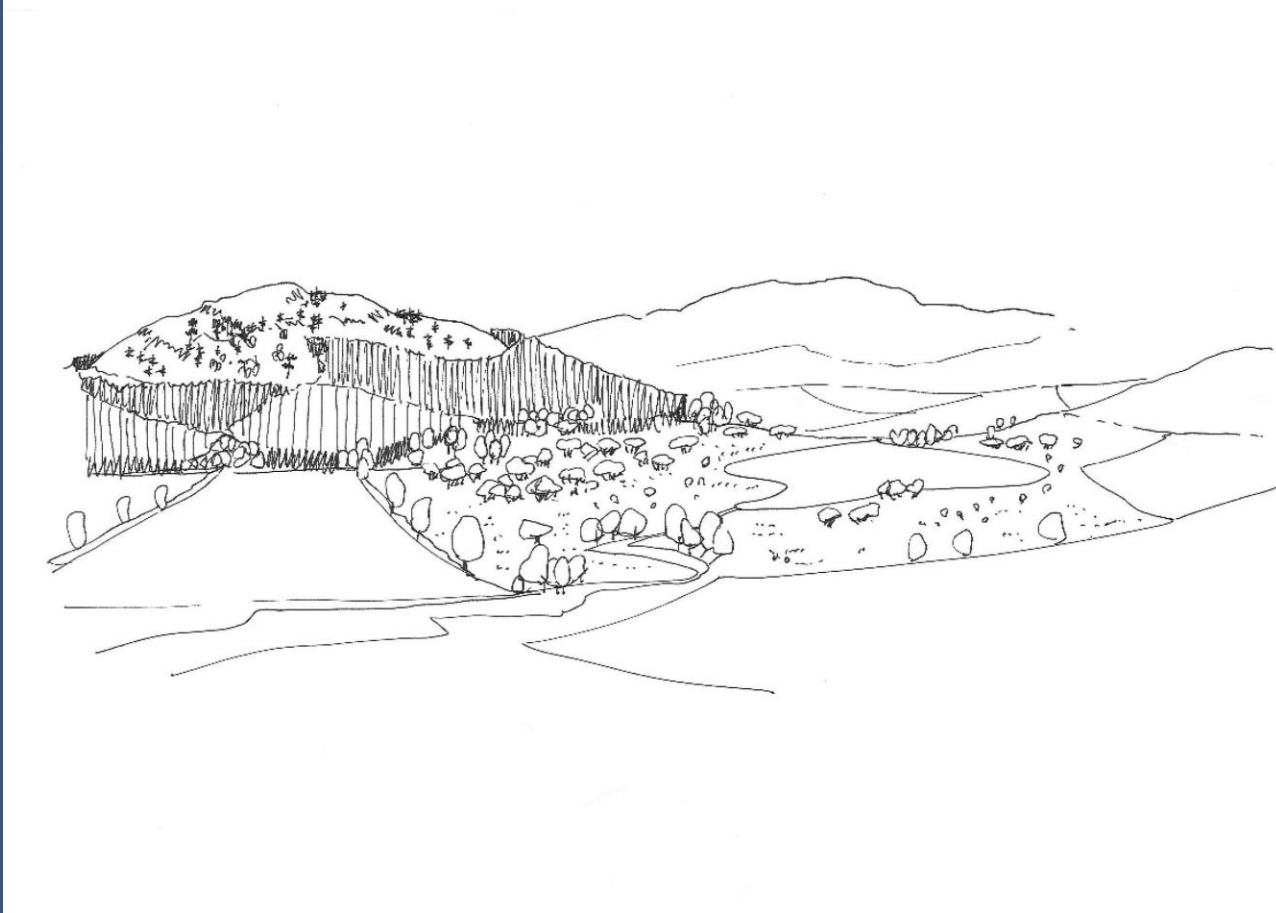


Unity in forests





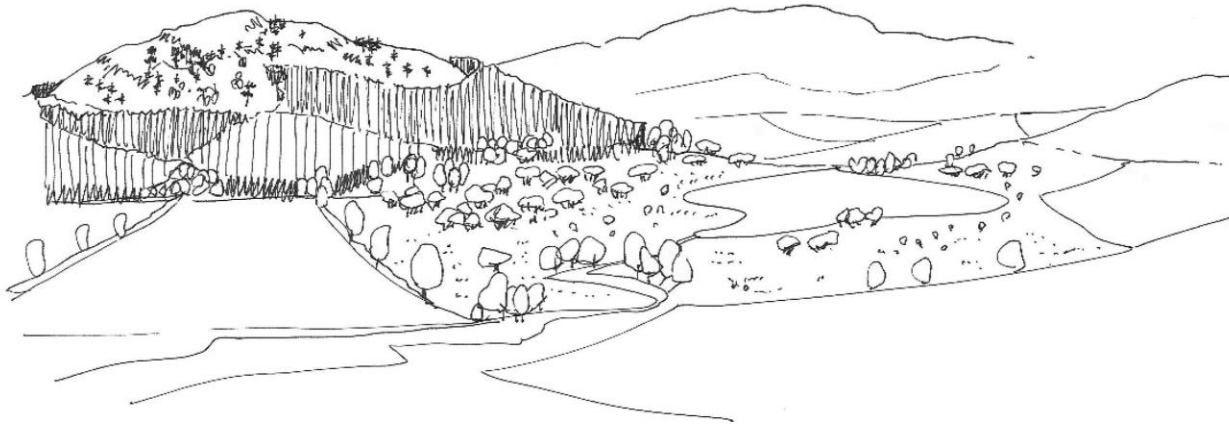
Unity in forests





Unity in forests

The forest may
be located on
deeper soils

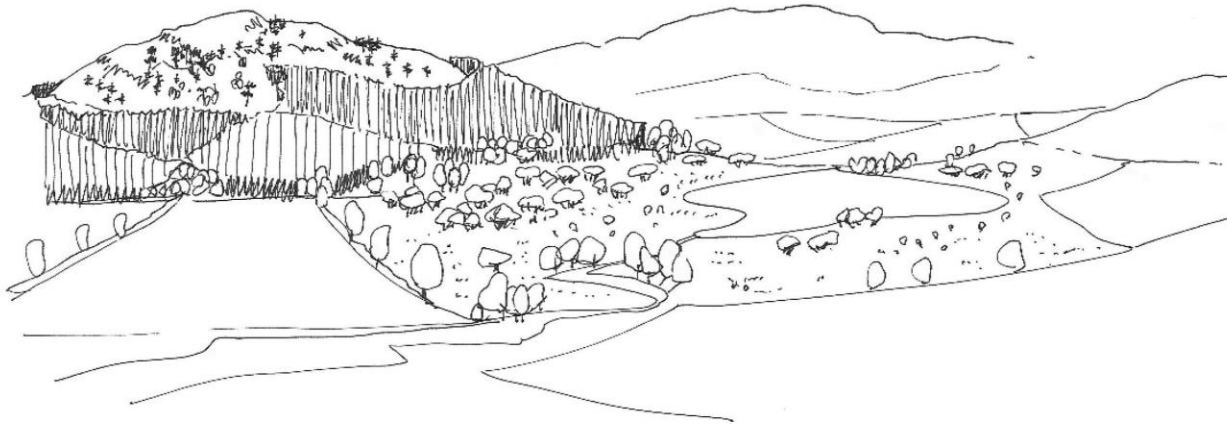




Unity in forests

*The forest may
be located on
deeper soils*

*Wetland offers
opportunity
for open ground
habitat*





Unity in forests

The forest may
be located on
deeper soils

Wetland offers
opportunity
for open ground
habitat

Planting relates well
to landscape scale

