



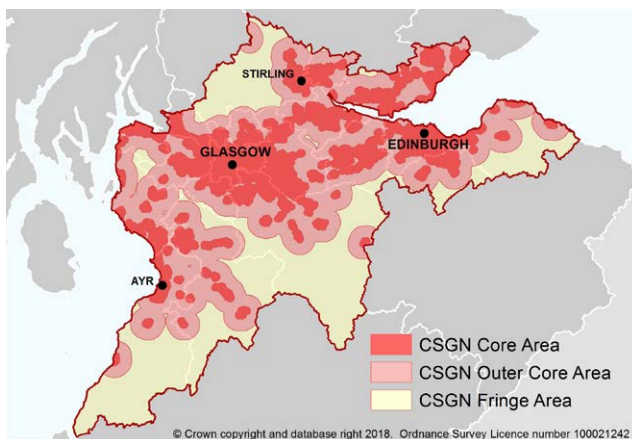
Scottish
Forestry
Coilltearachd
na h-Alba



A business case study: Greens Farm, Newbigging, Lanarkshire

Woodland Creation in the CSGN

Greens Farm comprises 380.73 hectares (ha) which mainly supports a stock farming enterprise. There is also some arable farming and currently 99 ha of mixed mainly native broadleaved woodland. Most of the woodland was planted within the last 20 years under separate SRDP Scottish Forestry Grant Scheme (SFGS) planting schemes. An area of 10 ha is pending restocking following a clearfell operation that was undertaken in 2015 when three 40-year-old, partly windblown, mixed conifer shelter woods were felled. These woodlands produced timber of generally poor quality, the major constituent of which was for chipwood and fuel wood. A further 21 ha of new productive conifer woodlands have been planted by Scottish Woodlands Ltd.



The objectives for woodland creation was to decrease reliance on farming income by diversifying land use and therefore income options for the future.

Planting scheme details

The 2007 SFGS broadleaf planting was undertaken to effectively fence off and manage the riparian margins of the North Medwyn burn which runs through the farm, whilst improving the visual amenity and ecological diversity of the farm within the wildlife corridors created.

Once this project was satisfactorily established further new planting, under the 2015 SRDP scheme, was considered by the owner on some of the poorer field areas to add to and enhance the areas of mixed conifer which were clearfelled in 2015. This new planting was of a more commercial type comprising both productive conifers – Sitka Spruce (SS) and Norway Spruce (NS) as well as less commercial Scots Pine (SP) and native mixed broadleaves.

In 2017, the owner received approval for the new planting project of 21 hectares. Planting again on poorer hill and in bye field areas, this woodland is designed to be fully commercial (mainly SS and NS) and will, in the short-term, help with rationalising the farm fencing. In the longer term, **it will provide a good tax – free income when clearfelled.**

The planting schemes either received Locational Premium payments or more latterly the CSGN payments (available under the current FGS) of an additional £2500/ha. These additional payments provided a strong incentive to follow the afforestation route on some of the poorer farmland.

Operations – all woodland projects

- Fencing and gates (both sheep and deer fencing).
- Cultivation: Mainly two – throw agricultural ploughing but with trench and hinge mounding also.
- Internal ‘v’ bucket draining to remove accumulations of surface water.
- Planting: Conifers at 2500 stems/ha and native broadleaves at between 1100 and 1600 stems/ha.
- Tree protection on broadleaves: Vole guards in deer fenced areas and 1.2 m tree shelters in stock fenced areas.

Tree species – 2015 SRDP planting:

Conifer

- Sitka spruce
- Norway spruce
- Larch
- Grand fir
- Juniper (Nbl mix)
- Scots pine (Nbl mix)

Native broadleaves

- Downy birch
- Oak
- Rowan
- Hazel
- Aspen
- Willow alder

Funding

The initial 2007 planting was funded under a now defunct SFGS. The 2015 and 2018 planting and the 2018 restocking works are funded under the current FGS. Grant support is available for:

- New fencing (stock and deer).
- Tree protection (tree shelters).
- Cultivation and planting.
- Five years annual maintenance.
- CSGN contribution – an additional premium based on location within the Central Belt which varies from between £750 to £2500/ha.
- **Single farm payment is also available annually on planted areas.**
- **Fencing and planting works can be completed in separate financial years, helping to assist cashflow.**

The indicative income figures for the 2015 FGS planting scheme area of 30.20 hectares as follows:

- **Year 1:** fencing, cultivation, planting and protection costs **£172,586** including the Core CSGN payment of £2500/ha.
- **Maintenance grant (5 years): £38,725**
- **Total income: £211,311** over the six-year period.

Maintenance

It is part of the contractual agreement with Scottish Forestry that trees planted will be established by the end of the year of the fifth payment of the maintenance grant.

For more information about the CSGN Contribution, visit forestry.gov.scot/supporting-regulations or call Scottish Forestry Central Scotland Conservancy office on **0300 067 6006**.



Scottish
Forestry
Coilltearachd
na h-Alba



Scottish Government
Riaghaltas na h-Alba
gov.scot